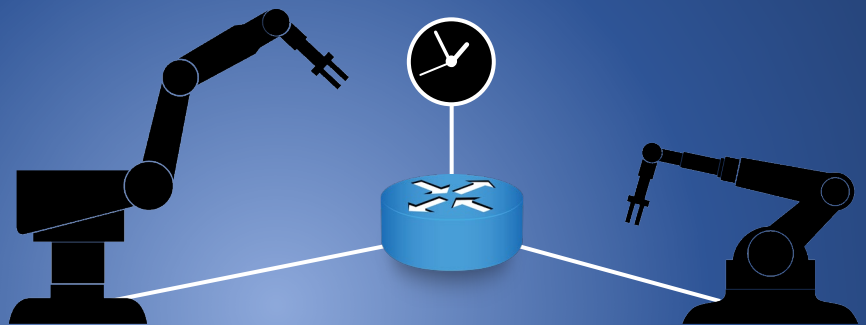


Time Aware End Station

Time Error Testing



This Test Guide shows how the Calnex Paragon-X can be used to prove Time Aware End Station compliance to IEEE 802.1AS (gPTP) and provides procedures to measure noise generation and time noise tolerance.



Contents

1	Introduction	3
1.1	Nomenclature	3
2	802.1AS Timing Mechanisms	4
2.1	Key metrics for Accurate Operation of the 802.1AS Timing Mechanism	4
3	Hardware and Software Required	6
3.1	Paragon-X	6
3.2	Accessories	6
3.3	Frequency Reference Source	6
3.4	Document References	6
4	Connecting Paragon-X to the Time Aware End Station (Device-under-Test)	7
5	Configure & Start Paragon-X Master for 802.1AS Time Aware End Station Tests	8
5.1	Start Paragon-X software and connect to the Paragon-X tester	8
5.2	Set Operating Mode	8
5.3	Configure Physical Connections	9
5.4	Measurement Configuration	10
5.5	Prepare and Start Master/Slave Emulation	11
6	802.1AS Protocol Check	16
7	Time Aware End Station Noise Generation Measurement	19
7.1	Measurement Process	19
7.2	Time Error and Peer Delay Test Results	20
7.3	Neighbour Rate Ratio (NRR) Test Results	23
8	Time Aware End Station Noise Tolerance Measurement	25
8.1	Expected Outcome	25
8.2	Measurement Process	25
8.3	Example Noise Tolerance Test Measurements	27
9	Time Aware End Station Impairment Tests	28
9.1	Test Process	28
	Appendix A. 802.1AS Timing Mechanisms	30
	802.1AS PTP Messages	30
	Logical Syntonization in 802.1AS Networks	31
	Appendix B. How does CAT Calculate CSRO, NRR and Peer Delay Turnaround Time?	33
	Cumulative Scaled Rate Offset (CSRO)	33
	Neighbour Rate Ratio (NRR)	33
	Peer Delay Turnaround Time	34

1 Introduction

IEEE 802.1AS, also known as gPTP (generalized PTP), specifies a highly accurate method of transferring time through Ethernet networks using PTP (Precision Time Protocol, defined in IEEE 1588-2008 and updated in IEEE 1588-2019). The 802.1AS standard underlies the IEEE 802.1 Time Sensitive Networking (TSN) group of standards that are used in industrial automation and in-vehicle networks. The 802.1AS standard was released in 2011 and updated in 2020.

This document outlines the key parameters and mechanisms involved with accurate time synchronization across Ethernet-based 802.1AS networks. A step-by-step guide is provided on how to use the Calnex Paragon-X to check that an 802.1AS Time Aware End Station complies with the 802.1AS profile and performance requirements. A section also describes how to generate impairments that simulate a network environment and evaluate the Time Aware End Station's resulting clock behaviour.

The descriptions in this document assume that the device-under-test (DUT) is an 802.1AS Time Aware End Station that outputs both a 1PPS signal and transmits Reverse Sync PTP messages. If your device only outputs one of these, ignore instructions for connecting and measuring the alternate signal.

1.1 Nomenclature

This document uses words and phrases consistent with the Calnex Paragon-X GUI that may differ from the names used in the 802.1AS standard. 802.1AS time-aware systems can be any networking device, including, for example, bridges, routers, and End Stations:

- An **802.1AS PTP End Station** is called a **Time Aware End Station** in the Paragon-X GUI.
 - An 802.1AS PTP End Station is either a PTP Grand Master or a recipient of PTP time information.
 - For Paragon-X operation, a **Time Aware End Station** always operates as a receiver of time information, not a Grand Master. A Time-Aware End Station implements a PTP Slave function.
 - For Paragon-X operation, a **Grand Master Clock** only transmits PTP time information and implements a PTP Master function.
- An **802.1AS PTP Relay Instance** is called a **Time Aware Bridge** in the Paragon-X GUI.
 - An 802.1AS PTP Relay Instance is a network device that receives time information from a Grand Master (perhaps indirectly through other PTP Relay Instances), applies corrections to compensate for delays in the network and the PTP Relay Instance itself, and retransmits the corrected information.
 - **Time Aware Bridges** have a PTP Slave function to recover the incoming clock and a PTP Master function that transmits time information having applied corrections to compensate for delays in the upstream network and the Time Aware Bridge itself.

2 802.1AS Timing Mechanisms

Time synchronization across 802.1AS networks uses the IEEE 1588 Peer Delay message exchange and Logical Syntonization mechanisms. Logical Syntonization is a mathematical method of correcting for varying oscillator frequencies in the path between Grand Master and End Station. A brief overview of the messages and Logical Syntonization mechanism is provided in Appendix A. Please refer to the following standards documents¹ for full details and specific requirements:

- IEEE 1588-2008 – IEEE Standard for a Precision Clock Synchronization Protocol for Networked Measurement and Control Systems.
- IEEE 1588-2019 – IEEE Standard for a Precision Clock Synchronization Protocol for Networked Measurement and Control Systems.
- IEEE 802.1AS-2011 - Timing and Synchronization for Time-Sensitive Applications in Bridged Local Area Networks.
- IEEE 802.1AS-2020 – Timing and Synchronization for Time-Sensitive Applications
- AVNU 802.1AS Recovered Clock Quality Testing rev 1.0 Oct-2016. [Download here.](#)

Using the IEEE 1588 Peer Delay mechanism and Logical Syntonization allows 802.1AS equipment to avoid the need for high-cost TCXO or OCXO oscillators and hardware PLLs. During steady state operation, 802.1AS equipment maintains synchronization to within 1µs across a network of seven hops. 802.1AS timing mechanisms can rapidly recover from network changes.

The AVNU document listed above proposes that 802.1AS Time Aware End Stations may send Reverse Synchronization messages instead of, or in addition to, outputting a 1PPS signal to expose the End Station's internal time. External test equipment can monitor the Reverse Sync messages and 1PPS signal to validate that the End Station correctly recovers time. Reverse Sync is useful in End Stations that do not have a 1PPS test output and End Stations that are difficult to reach in an industrial or in-vehicle network.

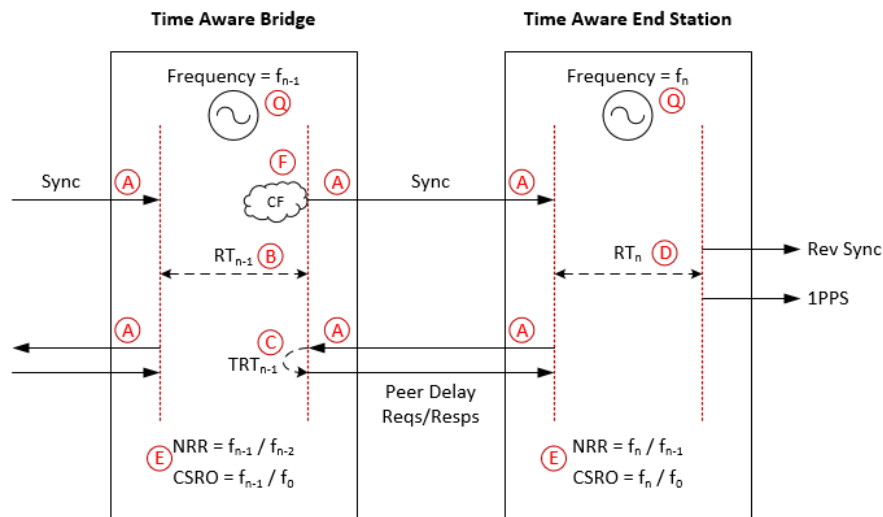
2.1 Key metrics for Accurate Operation of the 802.1AS Timing Mechanism

Several metrics are key to the successful operation of Logical Syntonization in an 802.1AS network:

- Accurate assessment of upstream link propagation delay by Time Aware Bridges and Time Aware End Stations.
- Accurate calculation of residency time in Time Aware Bridges.
- Accurate calculation of Neighbour Rate Ratio (NRR) and Cumulative Scaled Rate Offset (CSRO) by Time Aware Bridges and Time Aware End Stations.
- 802.1AS defines local clock resolution as less than or equal to 40ns (802.1AS-2020 section B.1.2). This defines the quantization level for synchronization calculations.
- Jitter and wander time noise generation of local device clocks are specified in 802.1AS-2020 section B.1.3.
- Residency time across 802.1AS Time Aware Bridges must not exceed 10ms (802.1AS-2020 section B.2.2).
- Peer delay message turnaround time must be less than 10ms (802.1AS-2020 section B.2.3).
- 802.1AS specifies that rate ratios must not exceed $\pm 0.1\text{ppm}$ (802.1AS-2020 section B.2.4).
- 802.1AS specifies that end-to-end time error between a Grand Master and Time Aware End Station should be less than $\pm 1\mu\text{s}$ across seven network hops (802.1AS-2020 section B.3). The standard does not break down the time error budget per device.

¹ IEEE standards are available for purchase at <https://www.techstreet.com/ieee>.

The diagram below shows a few locations where calculation or timing errors may occur in Time Aware Bridges and Time Aware End Stations. Tests using the Paragon-X can help to debug the sources of time error.



The dotted red lines indicate the timestamping planes inside the devices, typically implemented in embedded software on 802.1AS Time Aware Bridges and End Stations. Hardware timestamping moves the timestamp planes to the edge of the device where it is unaffected by variation in software execution time, so improves timestamp accuracy.

Referring to the diagram, sources of error include:

- Q** – Timestamp quantisation noise. Oscillator frequency jitter and wander.
- A** – Accuracy of latency between physical ports and timestamp planes.
- B** – Accuracy of Sync message Residency Time in Time Aware Bridges.
- C** – Accuracy of Peer Delay turnaround time in Time Aware Bridges.
- D** – Accuracy of Sync message to 1PPS and Rev Sync transmission in Time Aware End Stations.
- E** – NRR and CSRO calculation accuracy.
- F** – Correction Field (CF) calculation accuracy.

3 Hardware and Software Required

3.1 Paragon-X

Option 111	10GbE interface support (if the DUT has a 10G interface)
Option 201	Advanced IEEE1588v2 features
Option 205	Wander measurement
Option 206	Phase and time measurement
Option 252	IEEE 1588v2 Peer-to-Peer: One-box BC, TC & OC Test
Option 285	Reverse Sync Measurement (if the DUT supports Reverse Sync generation)
Option 133	External 1PPS/ToD/frequency converter accessory (if required to match the DUT outputs)

Paragon-X software version	X.10.42 (29X) and later
CAT software version	CAT 29.20 and later
PFV software version	PFV 29.0 and later

Note: Paragon-X X.10.42 (29X) includes CAT version 29.10. CAT 29.20 must be installed separately to update CAT.

3.2 Accessories

- SFP or SFP+ devices as required²
- Cables as required
- Calnex BNC/RJ-45 adapter cable (required for 1PPS accuracy/time error measurement)

3.3 Frequency Reference Source

- Option 132, Rubidium Interface (optional). Provides an accurate 10MHz reference clock.

3.4 Document References

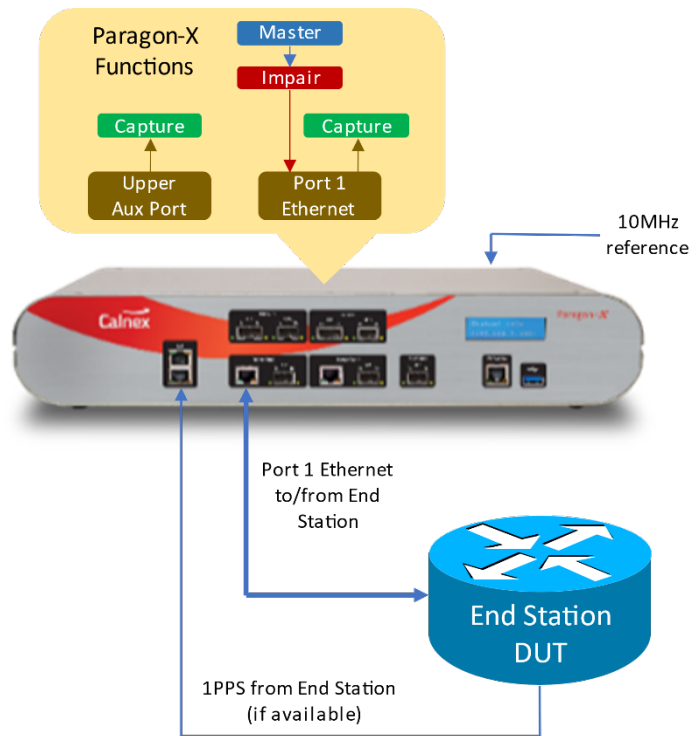
- Calnex Paragon-X Getting Started Guide CX4010
- Calnex Cabling Considerations Document CX5009

Both documents are accessible from the “Help” menus of the Paragon-X GUI.

² XFP devices are not recommended for Time Error measurements as the retiming that is an integral element of the XFP introduces significant uncertainty when performing a Time Error test.

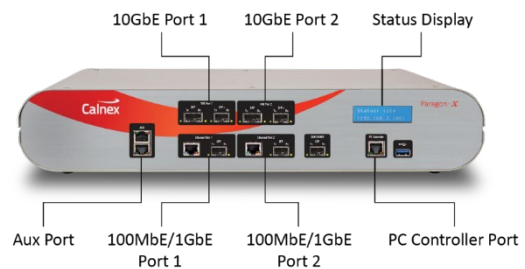
4 Connecting Paragon-X to the Time Aware End Station (Device-under-Test)

Connect the Paragon-X to the Time Aware End Station as shown:

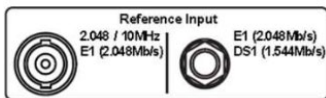


Paragon-X Front Panel Ports:

- Port 1 :
 - 100MbE Electrical or Optical (SGMII SFP)
 - 1GbE Electrical or Optical (SFP)
 - 10GbE Optical (XFP or SFP+)
- Port 2 : unused in End Station tests
- Upper Aux Port : 1PPS measurement



1. Calnex recommends connecting an external 10MHz reference clock signal³ to the BNC connector on the Paragon-X rear panel:



Paragon-X controls and measures time using the reference clock so the accuracy and stability of this reference signal will influence the accuracy of your test results. The Calnex Rubidium is a suitable source of a 10MHz reference clock.

2. Connect Ethernet port 1 (Master side of Paragon-X) to the Time Aware End Station network input.
3. Connect the 1PPS output of the Time Aware End Station to the Paragon-X upper Aux Port. Use a BNC/RJ-45 adapter cable accessory if required, black connector.

³ Alternate reference clocks are 2.048MHz, E1 (2.048Mb/s) and DS1 (T1) (1.544Mb/s).

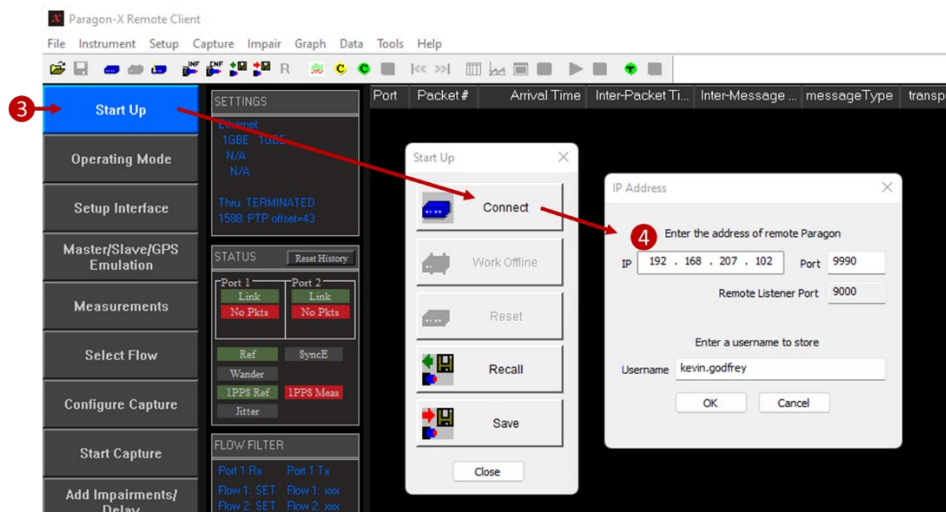
5 Configure & Start Paragon-X Master for 802.1AS Time Aware End Station Tests

The test steps listed below are described in more detail on the following pages:

1. Start Paragon-X software and connect to the Paragon-X tester.
2. Set Operating Mode.
3. Configure physical connections.
4. Measurement Configuration.
5. Prepare and Start Master/Slave Emulation.

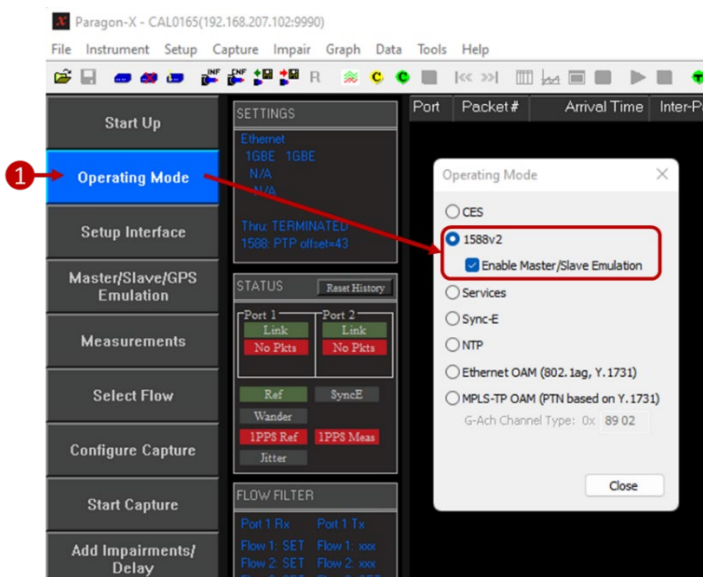
5.1 Start Paragon-X software and connect to the Paragon-X tester

1. Verify physical connections have been completed per Section 4 of this document.
2. Start the Paragon-X GUI.
3. Select **Start Up** and **Connect**.
4. Enter the IP address of Paragon-X (displayed on the Paragon-X status display) and click OK.
5. See Paragon-X Getting Started Guide for more details.



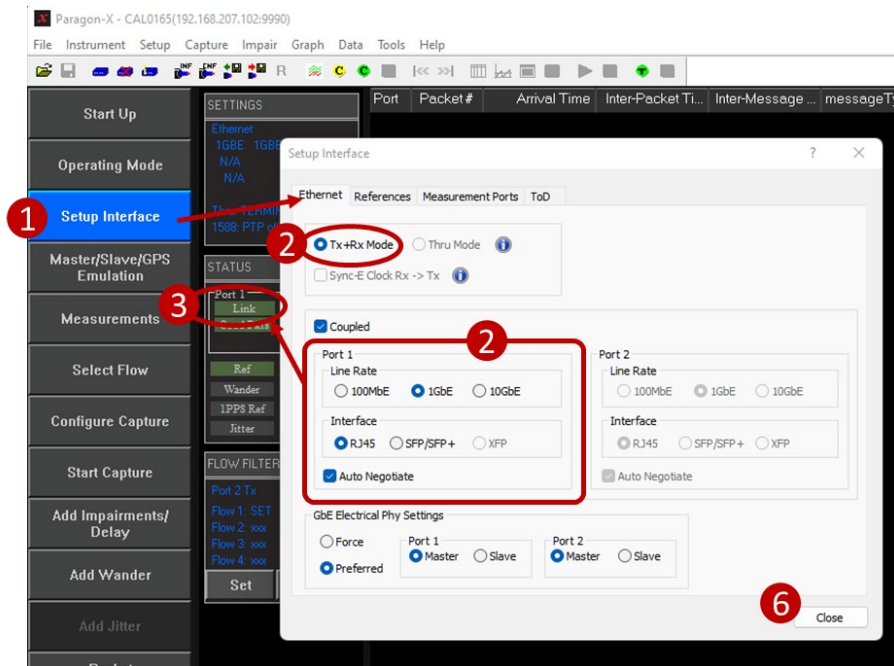
5.2 Set Operating Mode

1. Select **Operating Mode** > **1588v2**, check the **Enable Master/Slave Emulation** checkbox then **Close**.

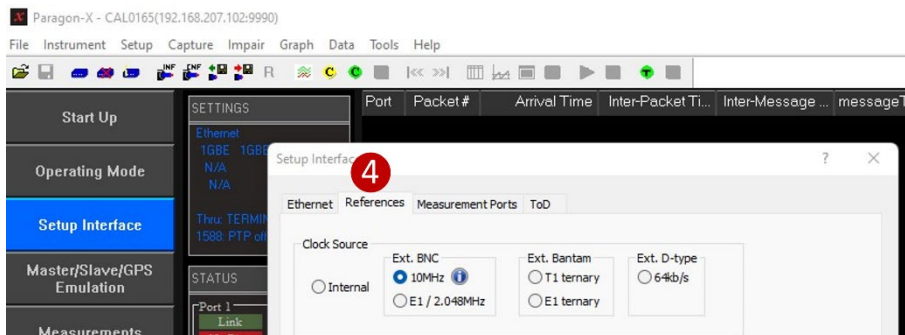


5.3 Configure Physical Connections

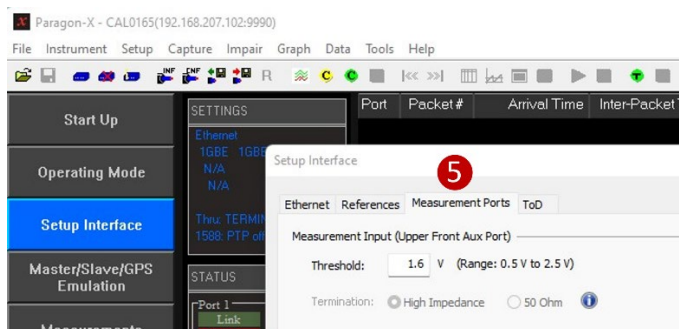
1. Select **Setup Interface** and open the **Ethernet** tab in the pop-up window.
2. Ensure that **TX+RX Mode** is selected, then set the Port 1 Ethernet configuration to match the Time Aware End Station under test. The example shown here is for a 1000Base-T connection.
3. Check that the **Link** status is green to indicate that Paragon-X and the DUT have an active Ethernet link.



4. Select the **References** tab and configure a stable reference for Paragon-X. An external source is recommended. The 1PPS Reference Input and Reference Output parts of the tab are not required for this test.



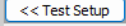
5. If testing a Time Aware End Station with 1PPS output, select the **Measurement Ports** tab and set the threshold voltage for the 1PPS measurement input.



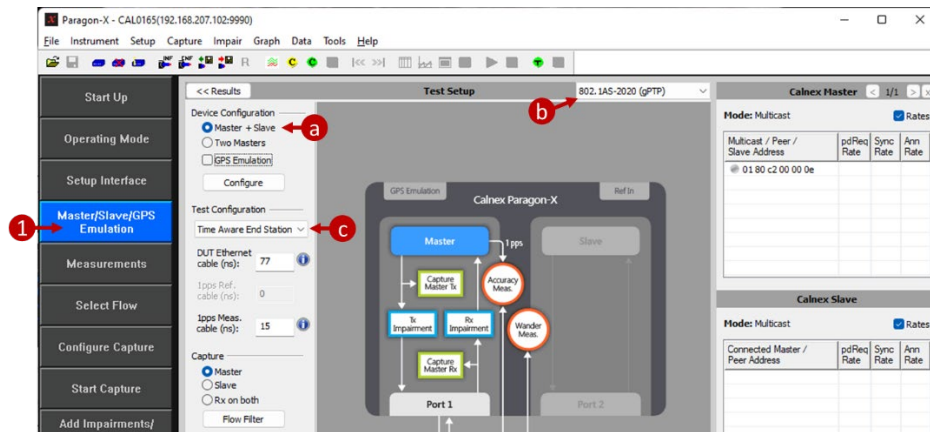
6. **Close** the Setup Interface pop-up window.

5.4 Measurement Configuration

1. Select **Master/Slave/GPS Emulation**.

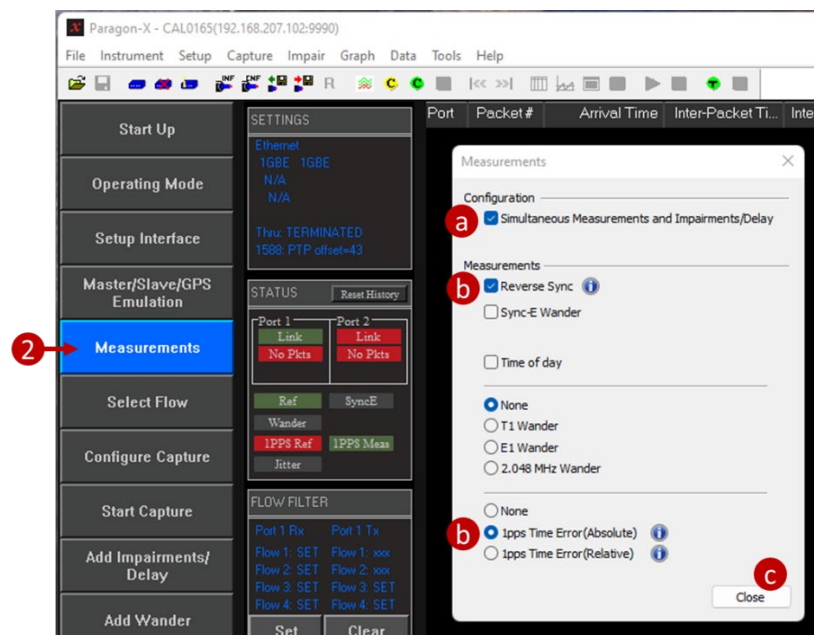
If the panel opens to the detailed configuration panel, click the  button to show the main Master/Slave emulation panel, then

- a) Set **Device Configuration = Master + Slave**.
- b) Select **802.1AS (gPTP)** or **802.1AS-2020 (gPTP)** from the profile drop-down list to match the profile that your Time Aware End Station uses.
- c) Select **Time Aware End Station** from the Test Configuration drop-down list.



2. Select **Measurements**, then

- a) Check the **Simultaneous Measurements and Impairment/Delay** option.
- b) Enable the **Reverse Sync** and/or **1PPS Time Error (Absolute)** options as appropriate for your DUT.
- c) **Close** the Measurements pop-up window.



5.5 Prepare and Start Master/Slave Emulation

1. Select **Master/Slave/GPS Emulation**, then

- a) If the Time Aware End Station hardware timestamps PTP messages at the edge of the device, enter the DUT to Paragon-X Ethernet Cable Delay.

To correctly perform calculations, the delay caused by the Ethernet cable that connects the Paragon-X port 1 and Time Aware End Station must be compensated for. Values of 5.1ns per meter of electrical cable and 4.9ns per meter of optical cable are typical. See Calnex Cabling Considerations Document CX5009 for more information.

- b) Enter the 1PPS Measurement Cable Delay.

A value of 5.1ns per meter of cable is typical. See Calnex Cabling Considerations Document CX5009 for more information.

- c) Check that the Port 1 link LED is green. If the link is not up, check the Ethernet cabling, Paragon-X interface setup, and the Time Aware End Station interface setup.

The screenshot shows the Paragon-X software interface. The sidebar on the left has a red circle '1' next to the 'Master/Slave/GPS Emulation' option. The main window displays the 'Test Setup' configuration for '802.1AS-2020 (gPTP)'. The 'Device Configuration' section shows 'Master + Slave' selected. The 'Test Configuration' section shows 'Time Aware End Station' selected. The 'DUT Ethernet cable (ns)' is set to 77 (marked with a red circle 'a'), '1pps Ref. cable (ns)' is 0, and '1pps Meas. cable (ns)' is 15 (marked with a red circle 'b'). The 'Capture' section shows 'Master' selected. The 'Measurement' section shows 'Manual calibration' checked. The 'Link Status' table at the bottom right shows Port 1 with a green link LED and Port 2 with a red link LED. The status bar at the bottom indicates 'Status: Idle'.

Port	Link	Rx Packet
1	Green	NO PACKETS
2	Red	NO PACKETS

Port	Link	Ref Lock	1PPS Ref	1PPS Meas
1	Green	Green	Red	Green
2	Red	Red	Red	Red

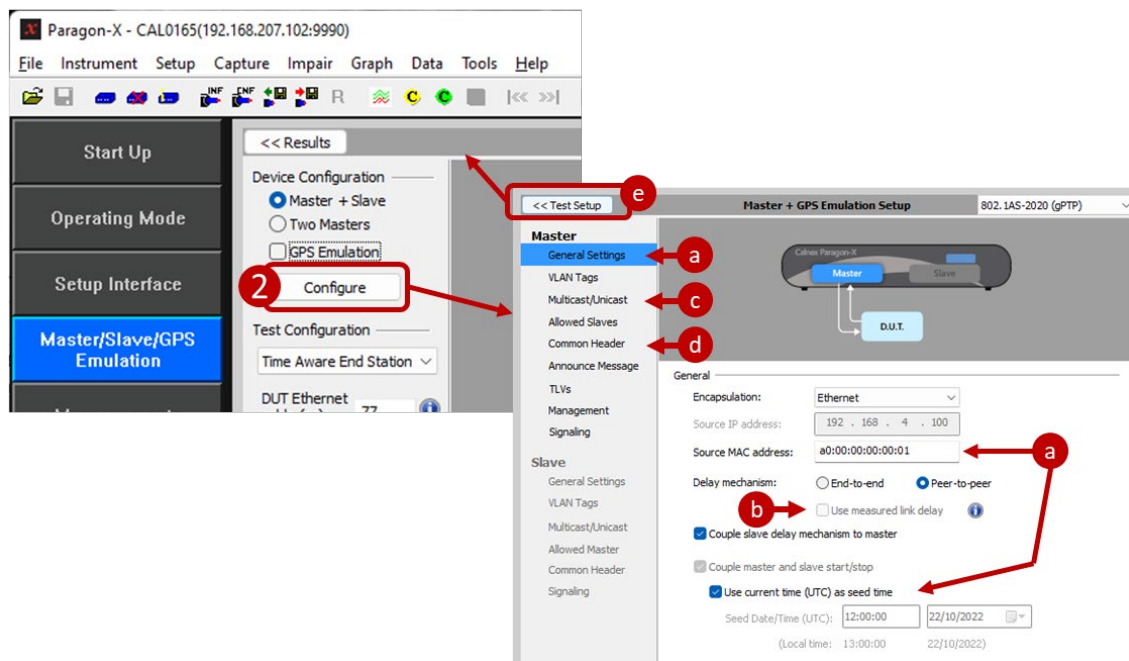
2. Selecting **802.1AS (gPTP)** or **802.1AS-2020 (gPTP)** from the profile drop-down list configures the Paragon-X with a set of default 802.1AS PTP parameters suitable for many devices. Paragon-X Master PTP parameters can be reviewed by clicking the **Configure** button and changed if required. When changing Master settings, ensure that they remain in compliance with the selected profile by observing the displayed profile name – if **Custom Profile** is shown, settings are incompatible and the required profile should be reselected from the menu. Typical parameter adjustments are:


- a) The Source MAC address that the Paragon-X master uses and the seed time for testing can be set in the **General Settings** area.
- b) If the Time Aware End Station timestamps PTP messages in software, check the **Use measured link delay** checkbox in the **General Settings** area.

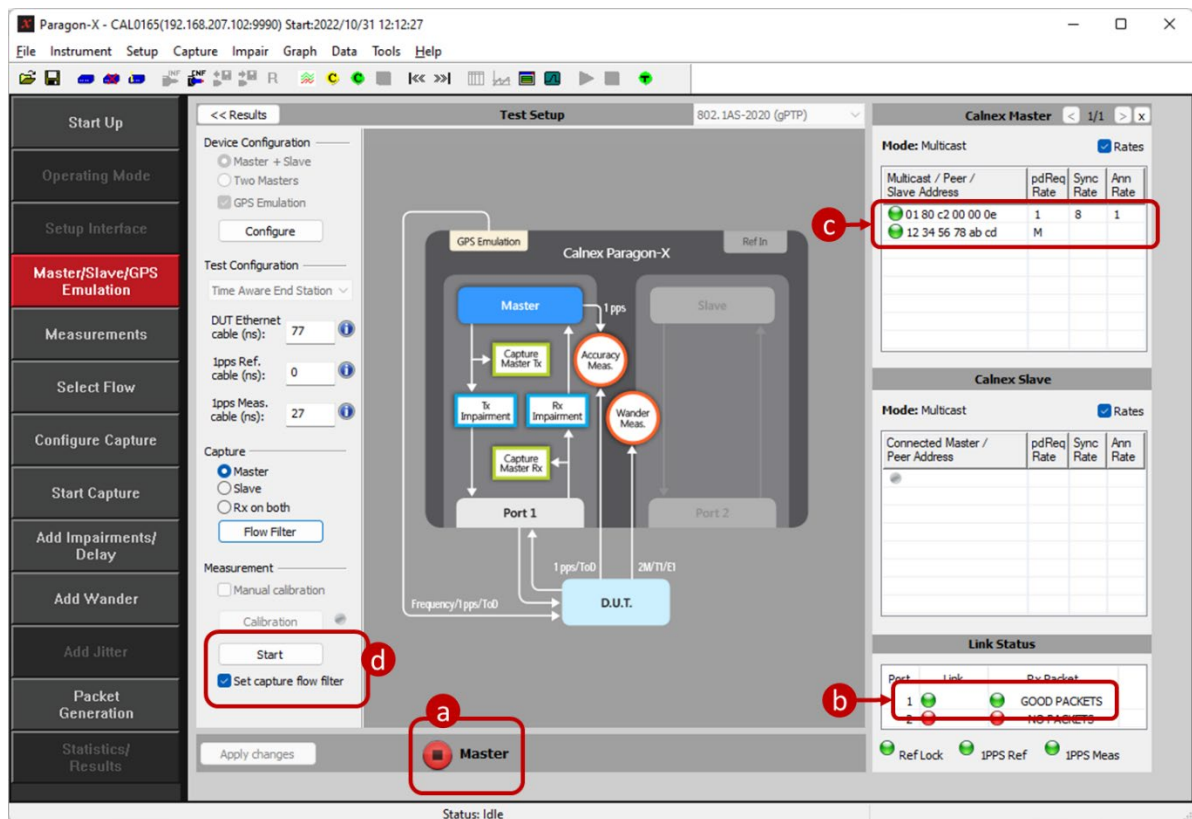
When the **Use measured link delay** option is selected, Paragon-X Peer Delay messages are used to measure the link delay in real-time and to automatically adjust for the link delay in Time Error measurements. Calnex recommends that this option is enabled when testing Time Aware End Stations that perform timestamping in software.

Refer to the previous step to enter the DUT to Paragon-X cable compensation delay if the Time Aware End Station performs hardware timestamping.

- c) Message rates and the Peer Delay MAC address can be adjusted in the **Multicast/Unicast** area.
- d) One- or two-step operation can be selected in the **Common Header** area.
- e) After reviewing the detailed PTP Master parameters, click the **<< Test Setup** button to return to the main **Master/Slave/GPS Emulation** screen.



3. Start the Paragon-X Master by clicking the  button:
 - a) The Master is now running and connecting to your Time Aware End Station. The Master button changes to a red stop button.
 - b) Confirm that the Paragon-X master has link-up and is receiving PTP packets (two green LEDs).
 - c) Confirm that the Paragon-X is connected to your Time Aware End Station:
 - In the screenshot below, the Paragon-X master is transmitting eight Syncs per second, one Peer Delay Request per second, and one Announce per second to multicast address 01:80:c2:00:00:0e.
 - The Time Aware End Station is sending Peer Delay Response messages from its MAC address 12:34:56:78:ab:cd
 - d) Start a capture:
 - Check the **Set capture flow filter** checkbox to set the capture flow filters appropriately set for an 802.1AS Time Aware End Station test.
 - Click the **Start** button in the **Measurement** area.

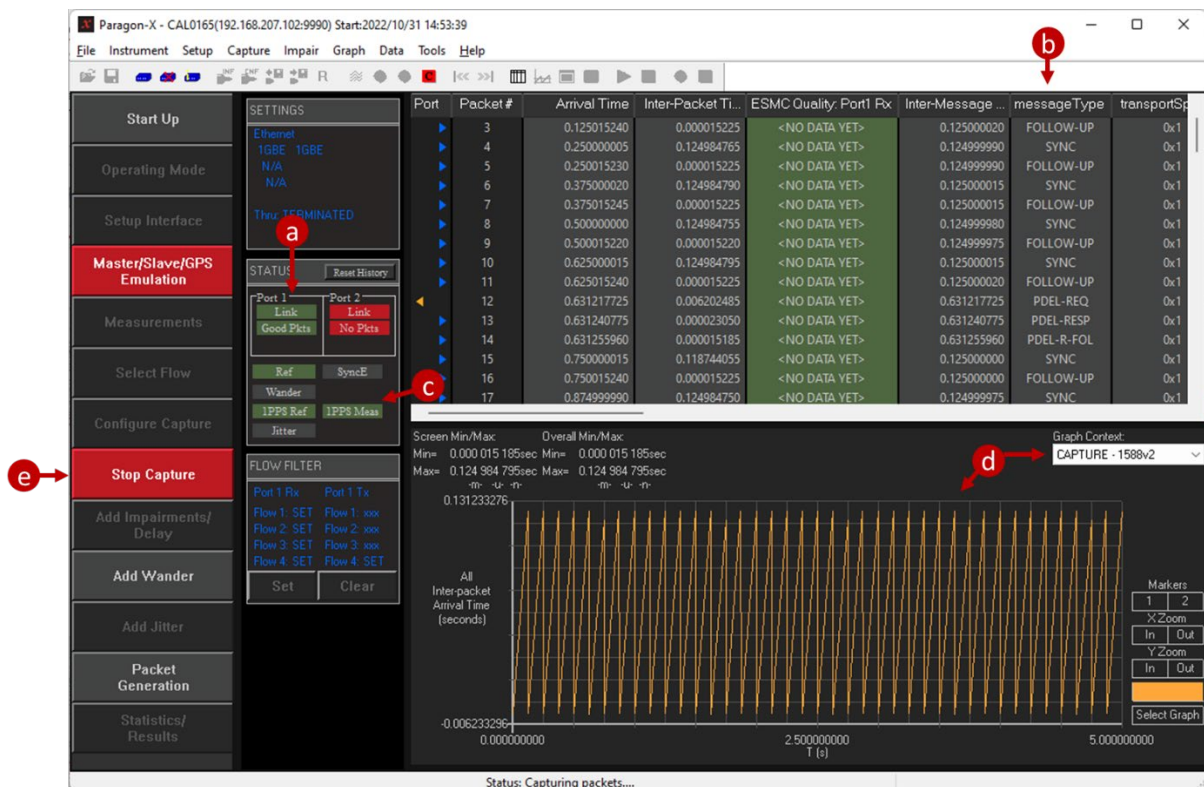


4. Allow the capture to run for 10-20 seconds:

- The status panel shows that the Paragon-X master link is up and receiving packets.
- PTP messages will be decoded and listed. Scroll left/right to see all message details and up/down to see all messages. This display is for guidance only, PFV should be used for determining protocol details and compliance.

Note that there are no Announce messages in the capture. This is because the standard set of capture flow filters only captures PTP timing event messages.

- Verify that the 1PPS measurement status indicator is green.
- Initially the graph view shows captured PTP packet delay variation (PDV). You can see the 1PPS measurement by changing the **Graph Context** drop-down to 1PPS.
- Stop the capture by clicking the **Stop Capture** button.

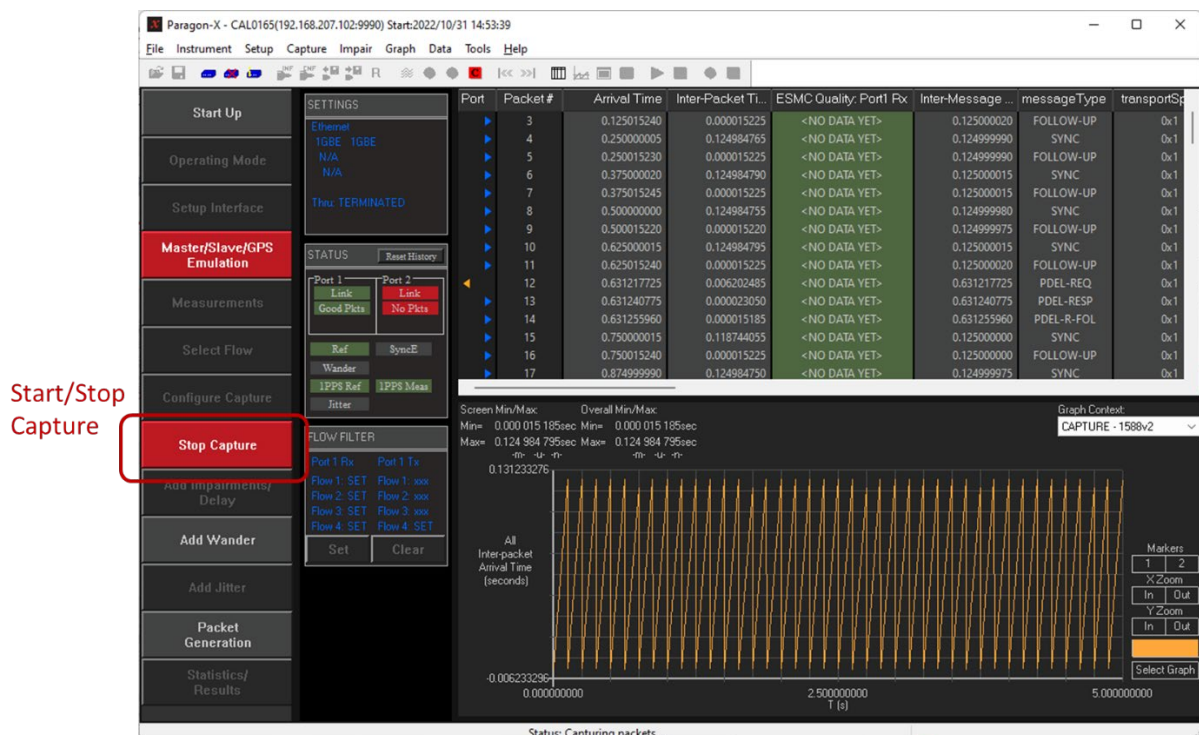


- If you need to change any configuration parameters in the Paragon-X Master, click the **Master** button in the **Master/Slave/GPS Emulation** panel. Otherwise, leave the Paragon-X Master running so that the Time Aware End Station's clock remains locked.

6 802.1AS Protocol Check

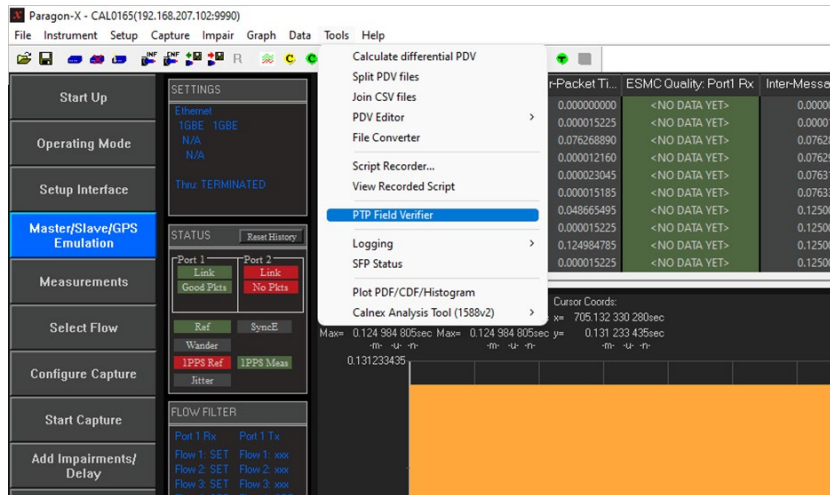
The first step of testing an 802.1AS Time Aware End Station is to confirm it complies with the 802.1AS profile. In this test, the Time Aware End Station will connect to the Paragon-X and exchange PTP messages that will be analyzed using the PTP Field Verifier (PFV).

1. Perform the **Master/Slave Emulation Configuration** steps described in Section 5 of this document:
 - Start the Paragon-X Master and check that the Port 1 link is up and receiving packets from the Time Aware End Station.
 - Check that the capture flow filters are set, including Announce messages.
 - Impairments are not required for this test.
2. With Master Slave Emulation active, start a capture using the **Start Capture** button.

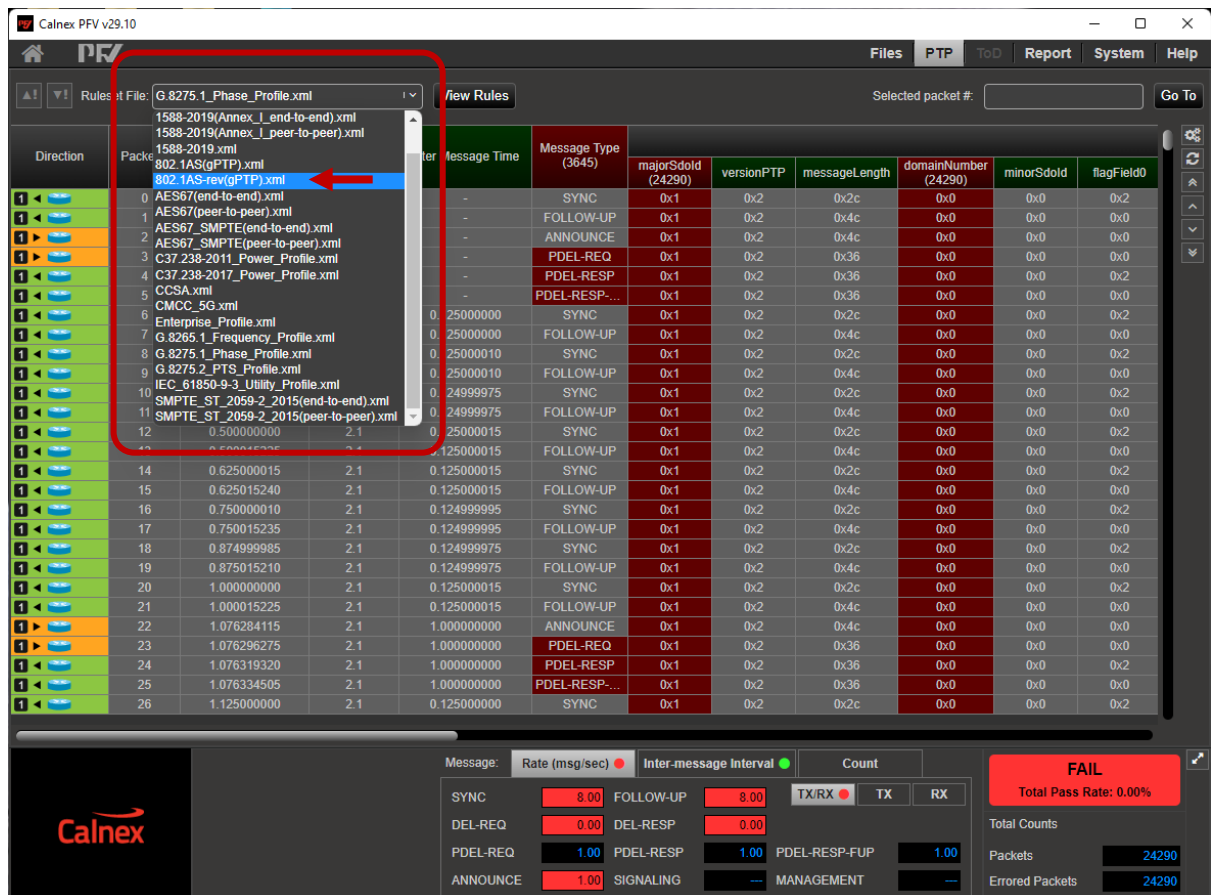


3. Allow the capture to run for a minute, then use the **Stop Capture** button to stop the capture.

4. Select **Tools > PTP Field Verifier** from the **Tools** menu.



PFV will launch and display the PTP messages exchanged between Paragon-X and the Time Aware End Station. The initial view will probably have many cells colored red because PFV opens with a non-802.1AS rule set. Select and apply the relevant ruleset from the drop-down list for your equipment: **802.1AS(gPTP).xml** for 802.1AS-2011 or **802.1AS-rev(gPTP).xml** for 802.1AS-2020.



With the relevant 802.1AS ruleset applied, you can now easily identify protocol errors. Fields of each message are displayed across the screen (horizontal scroll to see all the fields) with any errors highlighted in red. The bottom of the screen shows the result of checking the message rates.

Note: a message rate of zero indicates that either appropriate capture filters have not been set or there are no messages of this type being seen on the Paragon-X port 1.

Calnex PFV v29.10

Files PTP ToD Report System Help

Ruleset File: 802.1AS-rev(gPTP).xml View Rules Selected packet #: Go To

Direction	Packet #	Arrival Time	Decoded PTP Version	Inter Message Time	Message Type	majorSdId	versionPTP	minorVersionPTP	messageLength	domainNumber	minorS
1	24263	1213.076296275	2.1	1.000000000	PDEL-REQ	0x1	0x2	0x1	0x36	0x0	0x0
1	24264	1213.076319320	2.1	1.000000000	PDEL-RESP	0x1	0x2	0x1	0x36	0x0	0x0
1	24265	1213.076334505	2.1	1.000000000	PDEL-RESP-...	0x1	0x2	0x1	0x36	0x0	0x0
1	24266	1213.125000000	2.1	0.125000000	SYNC	0x1	0x2	0x1	0x2c	0x0	0x0
1	24267	1213.125015225	2.1	0.125000000	FOLLOW-UP	0x1	0x2	0x1	0x4c	0x0	0x0
1	24268	1213.250000015	2.1	0.125000015	SYNC	0x1	0x2	0x1	0x2c	0x0	0x0
1	24269	1213.250015240	2.1	0.125000015	FOLLOW-UP	0x1	0x2	0x1	0x4c	0x0	0x0
1	24270	1213.374999995	2.1	0.124999980	SYNC	0x1	0x2	0x1	0x2c	0x0	0x0
1	24271	1213.375015215	2.1	0.124999975	FOLLOW-UP	0x1	0x2	0x1	0x4c	0x0	0x0
1	24272	1213.500000010	2.1	0.125000015	SYNC	0x1	0x2	0x1	0x2c	0x0	0x0
1	24273	1213.500015235	2.1	0.125000020	FOLLOW-UP	0x1	0x2	0x1	0x4c	0x0	0x0
1	24274	1213.625000015	2.1	0.125000005	SYNC	0x1	0x2	0x1	0x2c	0x0	0x0
1	24275	1213.625015240	2.1	0.125000005	FOLLOW-UP	0x1	0x2	0x1	0x4c	0x0	0x0
1	24276	1213.750000010	2.1	0.124999995	SYNC	0x1	0x2	0x1	0x2c	0x0	0x0
1	24277	1213.750015235	2.1	0.124999995	FOLLOW-UP	0x1	0x2	0x1	0x4c	0x0	0x0
1	24278	1213.874999985	2.1	0.124999975	SYNC	0x1	0x2	0x1	0x2c	0x0	0x0
1	24279	1213.875015210	2.1	0.124999975	FOLLOW-UP	0x1	0x2	0x1	0x4c	0x0	0x0
1	24280	1214.000000000	2.1	0.125000015	SYNC	0x1	0x2	0x1	0x2c	0x0	0x0
1	24281	1214.000015225	2.1	0.125000015	FOLLOW-UP	0x1	0x2	0x1	0x4c	0x0	0x0
1	24282	1214.076284115	2.1	1.000000000	ANNOUNCE	0x1	0x2	0x1	0x4c	0x0	0x0
1	24283	1214.076296275	2.1	1.000000000	PDEL-REQ	0x1	0x2	0x1	0x36	0x0	0x0
1	24284	1214.076319320	2.1	1.000000000	PDEL-RESP	0x1	0x2	0x1	0x36	0x0	0x0
1	24285	1214.076334505	2.1	1.000000000	PDEL-RESP-...	0x1	0x2	0x1	0x36	0x0	0x0
1	24286	1214.125000000	2.1	0.125000000	SYNC	0x1	0x2	0x1	0x2c	0x0	0x0
1	24287	1214.125015225	2.1	0.125000000	FOLLOW-UP	0x1	0x2	0x1	0x4c	0x0	0x0
1	24288	1214.250000015	2.1	0.125000015	SYNC	0x1	0x2	0x1	0x2c	0x0	0x0
1	24289	1214.250015240	2.1	0.125000015	FOLLOW-UP	0x1	0x2	0x1	0x4c	0x0	0x0

Calnex

Message: Rate (msg/sec) Inter-message Interval Count

SYNC 8.00 FOLLOW-UP 8.00 TX/RX TX RX

DEL-REQ DEL-RESP

PDEL-REQ 1.00 PDEL-RESP 1.00 PDEL-RESP-FUP 1.00

ANNOUNCE 1.00 SIGNALING MANAGEMENT

PASS
Total Pass Rate: 100.00%

Total Counts
Packets 24290
Errored Packets 0

For some fields, the cause of the failure (that is, the reason why a field is flagged red) is displayed if you hover the cursor over the field. The example below shows an 802.1AS-2011 message exchange where the device is sending an incorrect PTP Version value.

Calnex PFV v29.10

Files PTP ToD Report System Help

Ruleset File: 802.1AS(gPTP).xml View Rules Selected packet #: 24266 Go To

Direction	Packet #	Arrival Time	Decoded PTP Version (24290)	Inter Message Time	Message Type	Announce Body Fields
						curUtcOffset gmPrior1 gmCkClass gmCk
1	24263	1213.076296275	2.1	1.000000000	PDEL-REQ	
1	24264	1213.076319320	2.1	1.000000000	PDEL-RESP	qPortId:port#=1
1	24265	1213.076334505	2.1	1.000000000	PDEL-RESP-...	
1	24266	1213.125000000	2.1	0.125000000	SYNC	
1	24267	1213.125015225	2.1			
1	24268	1213.250000015	2.1			
1	24269	1213.250015240	2.1			
1	24270	1213.374999995	2.1	0.124999980	SYNC	

Failure reason(s):
The current ruleset expects v2.0 PTP messages.

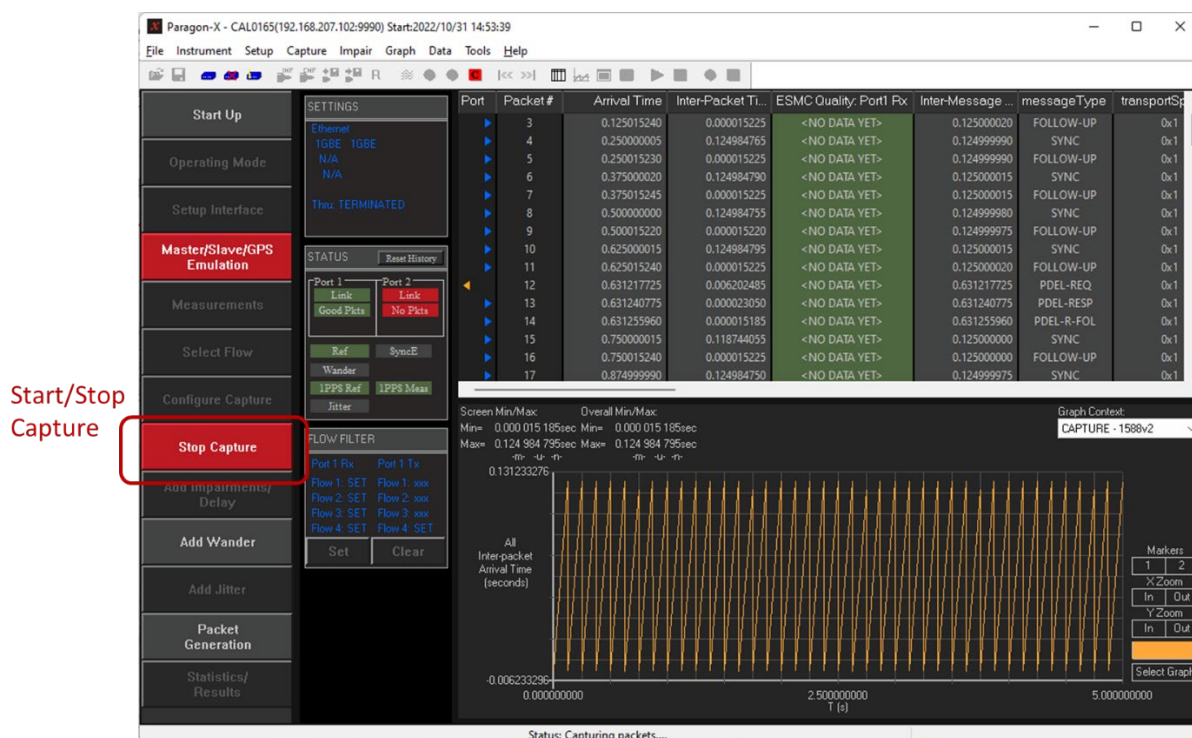
7 Time Aware End Station Noise Generation Measurement

Noise generation of a device represents the amount of noise produced at the output when there is an ideal input reference packet timing signal. All time-aware devices generate noise on their time signals due to hardware, software, and environmental factors.

The tests described in this section measure the time noise generation of an 802.1AS Time Aware End Station.

7.1 Measurement Process

1. Perform the **Master/Slave Emulation Configuration** steps described in Section 5 of this document:
 - Start the Paragon-X Master and check that the Port 1 link is up and receiving packets from the Time Aware End Station.
 - Check that the capture flow filters are set.
 - Impairments must not be set for this test.
2. With **Master Slave Emulation** active start a capture using the **Start Capture** button.

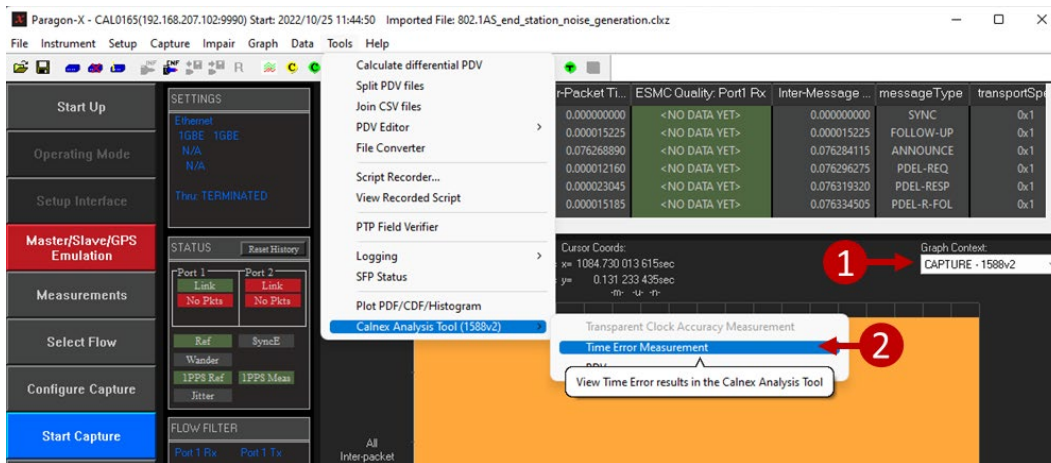


3. Allow the capture to run for at least 1000 seconds then use the **Stop Capture** button to stop the capture.
4. Measurement data can be saved from the Paragon-X using the **Export Multiple** command in the **File** menu. The measurement data is saved on your local PC as a *.clx file that can be imported to the Paragon-X software, or read by the CAT and PFV.

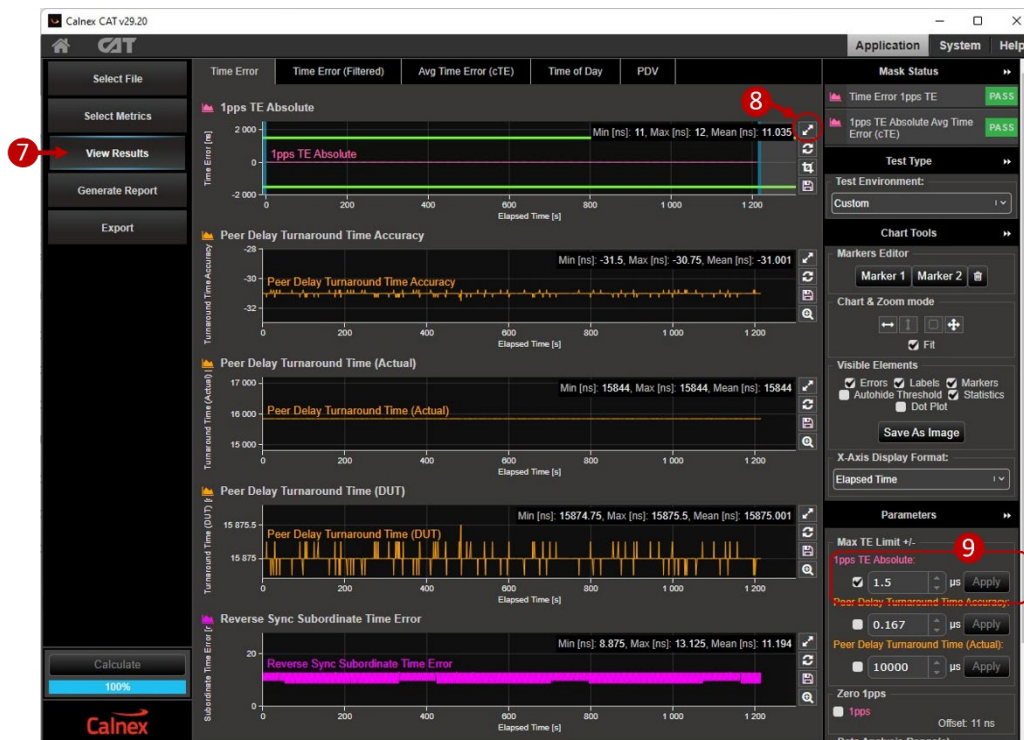
7.2 Time Error and Peer Delay Test Results

Time Error test results can be viewed while the test capture is running or after the test capture has been completed:

1. In the Paragon-X GUI, set the **Graph Context** to **CAPTURE - 1588v2**.
2. Select **Tools > Calnex Analysis Tool (1588v2) > Time Error Measurement**.



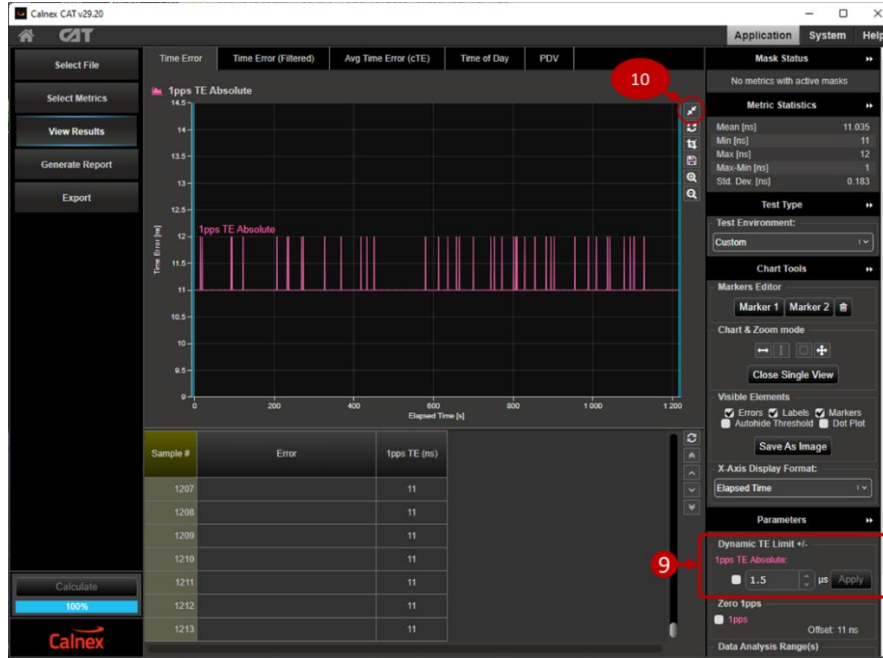
3. The CAT opens to the file selection page and shows the 802.1AS PTP data that has been imported.
4. In the Paragon-X GUI, set the **Graph Context** to **CAPTURE 1PPS/GP**.
5. Select **Tools > Calnex Analysis Tool (1PPS)**.
6. The 1PPS measurement metrics will now be available in CAT in addition to the PTP measurements.
7. In CAT, click the **View Results** button to see the initial view of the 1PPS and Reverse Sync PTP measurement results.
8. You can expand the 1PPS Time Error graph by clicking the **double arrow** button by the 1PPS TE Absolute graph to expand the 1PPS measurement.



- Uncheck the checkbox that applies the $\pm 1.5\mu\text{s}$ limits to the 1PPS measurement and click the **Apply** button. The 1PPS TE Absolute display will auto-scale to fit the graph area. You can enter your chosen 1PPS TE limits and apply them using the same user controls.

The graph shows how accurately the Time Aware End Station's clock is synchronized as reported by the 1PPS signal.

- Return to the main Time Error display by clicking the **double arrow** button.



- From the main Time Error display, click the double arrow button by the Reverse Sync Time Error graph to expand the Reverse Sync TE measurement. Toggle the left/right or up/down arrow buttons in the **Chart & Zoom mode area** then use the mouse scroll wheel to zoom the graph in the X or Y axis until you can see details. Clicking the magnifier buttons also zooms the graph display.

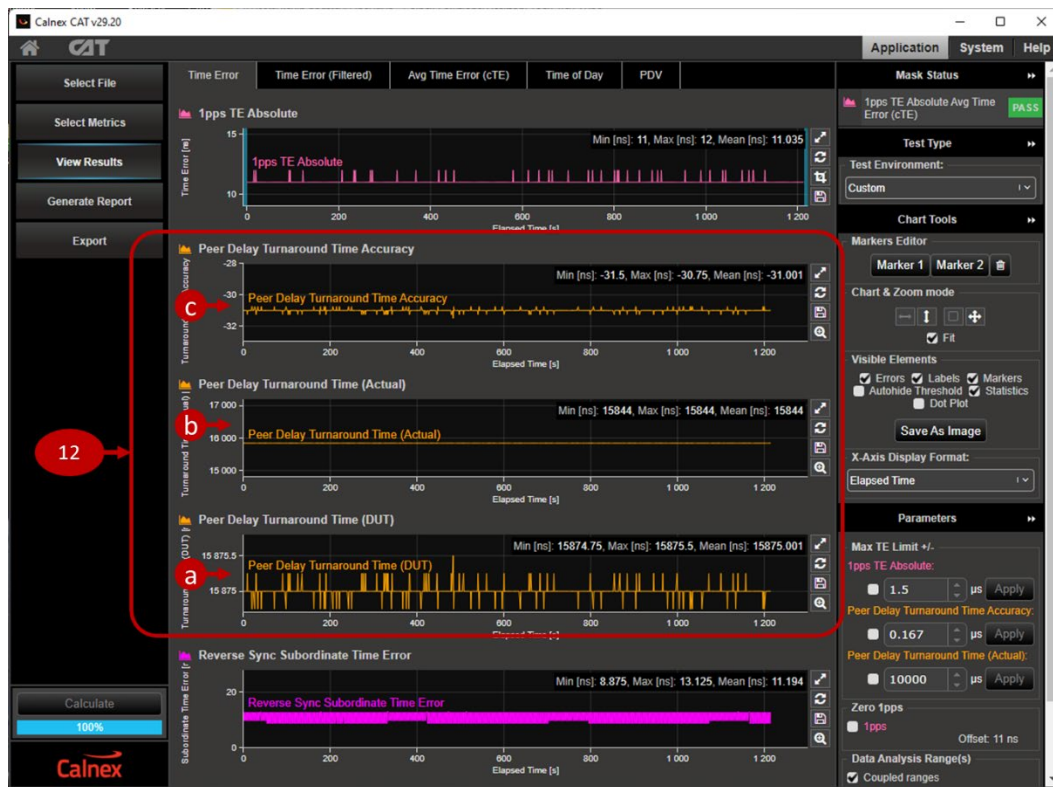
The graph shows how accurately the Time Aware End Station's clock is synchronized to the Paragon-X as determined by the timestamps in the Reverse Sync messages.



12. In the main Time Error display, there are three graphs showing the Peer Delay Turnaround time metrics. You can focus on a single graph by clicking the double arrow button next to the graph that you want to analyze. Use the zoom buttons and mouse scroll wheel to zoom in as required.

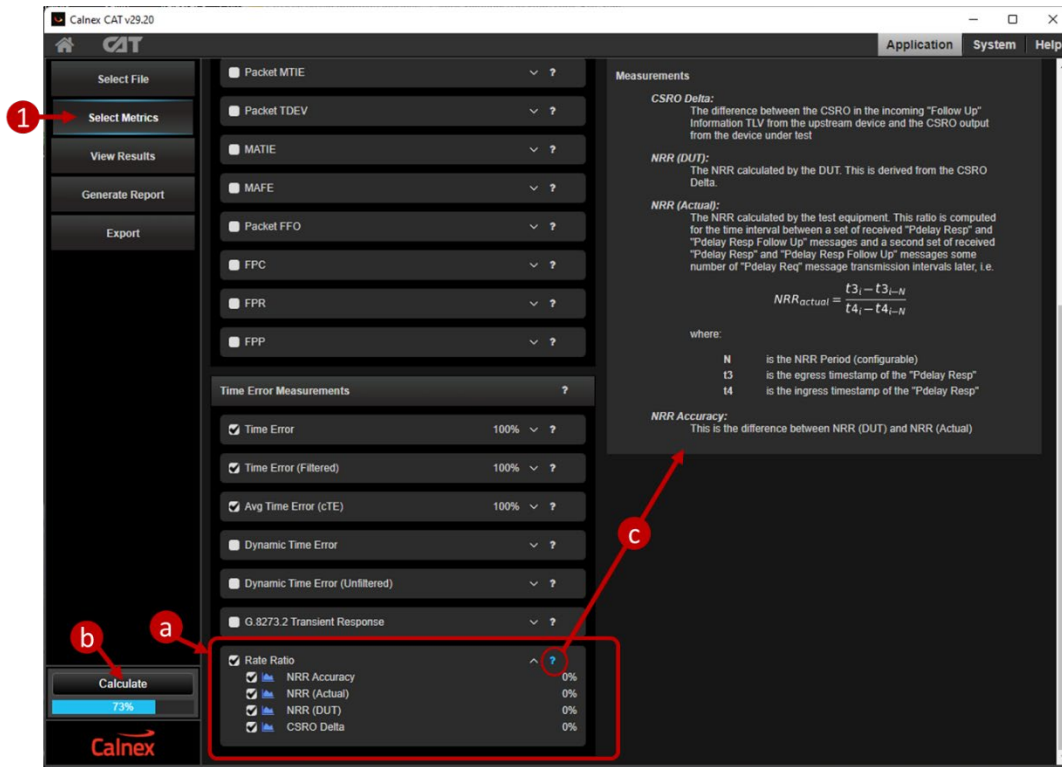
- Peer Delay Turnaround Time (DUT)** shows the Time Aware End Station's own estimation of Turnaround Time (that is, the time taken to send a Peer Delay Response message after receiving a Peer Delay Request message) as determined by the timestamps in the Peer Delay Response messages.
- Peer Delay Turnaround Time (Actual)** shows the actual Turnaround Time of the Time Aware End Station, measured by Paragon-X. The 802.1AS standards state that the Peer Delay Turnaround Time of Bridges and End Stations must be less than 10ms.
- Peer Delay Turnaround Time Accuracy** shows the delta between the Time Aware End Station estimation of the turnaround time and the actual Turnaround Time as measured by Paragon-X.

Further details of the Peer Delay turnaround time calculations that CAT uses are given in Appendix B.



7.3 Neighbour Rate Ratio (NRR) Test Results

- Neighbour Rate Ratio test results are initially not visible in CAT so click the **Select Metrics** button to select and calculate them, then
 - Check the **Rate Ratio** checkbox and click the ▼ icon to expand the group of rate ratio metrics.
 - The rate ratio results must be calculated so click the **Calculate** button and wait for 100% completion.
 - Clicking the ? icon will open context-aware help for the rate ratio calculations.



- Click **View Results** and select the **Rate Ratio** tab to see the Rate Ratio test results.



3. The 802.1AS standards specify that the rate ratio must not exceed $\pm 0.1\text{ppm}$ (802.1AS-2011 section B.2.4, 802.1AS-2020 section B.2.4). This limit is applied by default and visible as the green limit lines on the NRR Accuracy graph. If the NRR Accuracy meets the configured limit, a green PASS indication will be shown in the top-right area of the CAT window; exceeding the set limit will show a red FAIL. To remove the limits, uncheck the **NRR Accuracy** checkbox and click **Apply**. The NRR Accuracy graph will auto-scale for better visibility after removing the limits
4. You can modify the number of packets over which CAT averages the NRR calculation to match the calculation used by the End Station:
 - a) Set the **NRR Period** and click **Apply**.
 - b) Click **Calculate** to recalculate the NRR results.
5. Three graphs show the Neighbour Rate Ratio test results:
 - a) **NRR Accuracy** shows the accuracy of the Time Aware End Station's NRR calculation.
 - b) **NRR (Actual)** shows the actual NRR between the Time Aware End Station and the upstream device (Paragon-X). This is calculated using Peer delay messages.
 - c) **NRR (DUT)** shows the Time Aware End Station's internal estimation of the Neighbour Rate Ratio.
6. The **CSRO Delta** graph shows the difference between the expected CSRO value and the actual CSRO data reported in Reverse Sync messages. Reverse Sync messages are expected to carry a CSRO value of 1.0.

Further details of the Neighbour Rate Ratio and CSRO calculations are provided in Appendix B.

8 Time Aware End Station Noise Tolerance Measurement

PTP messages traversing an 802.1AS network will accumulate PDV and time errors as the messages pass through network equipment. Time Aware End Stations must be capable of tolerating noise on the incoming PTP flow while delivering in-specification timing and without losing lock.

The Noise Tolerance Test involves applying a known varying delay (Time Error) profile to the PTP flow and measuring the effect on the Time Aware End Station's clock. The 802.1AS standards do not specify noise limits so equipment vendors and network operators must define their own limits for Time Aware End Station performance when subject to anticipated network delays and PDV.

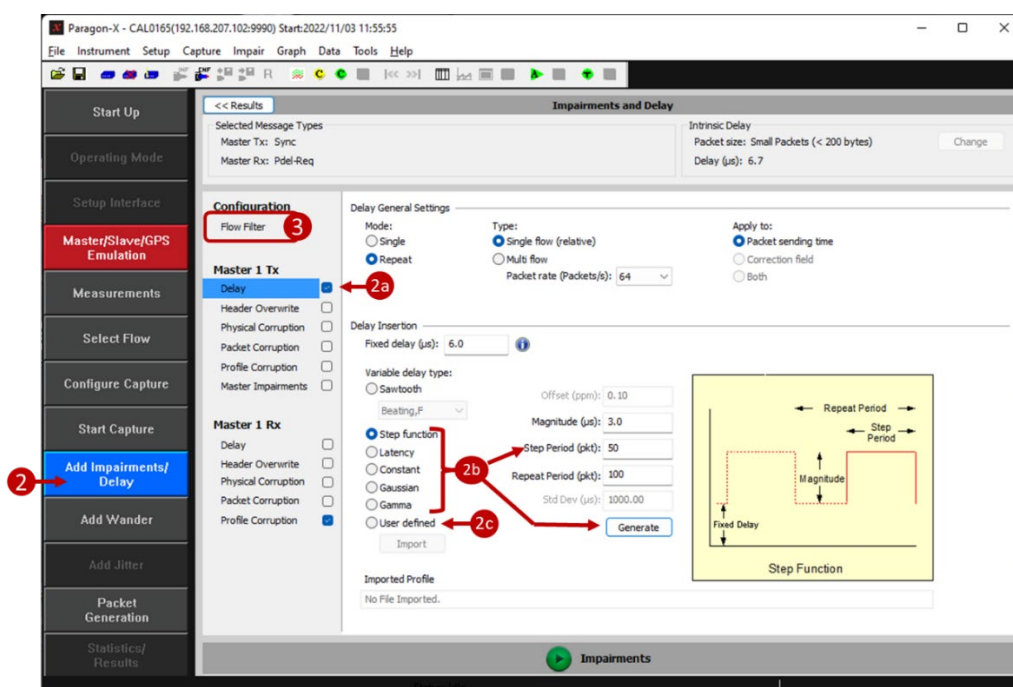
The steps in this section describe how to use the Paragon-X to apply delay patterns that simulate network noise and stress the DUT. Paragon-X monitors the 1PPS and Reverse Sync outputs from the Time Aware End Station, but you will need to monitor the device's internal synchronization state machine to know when changes occur (e.g. the device enters holdover).

8.1 Expected Outcome

- The Time Aware End Station should maintain reference lock until the noise exceeds your defined level for the End Station to switch reference or enter holdover state. The noise can be generated by Paragon-X but the state change must be observed from the Time Aware End Station's management interface.
- The performance of the Time Aware End Station's internal clock and time calculations can be seen in CAT and user-defined performance limits applied.
- If a desired Noise Transfer performance is known, then custom impairment profiles and measurement masks/limits can be used to confirm that the DUT meets these requirements.

8.2 Measurement Process

1. Perform the **Master/Slave Emulation Configuration** steps described in Section 5 of this document:
 - Start the Paragon-X Master and check that the Port 1 link is up and receiving packets from the Time Aware End Station.
 - Check that the capture flow filters are set.
2. Click the **Add Impairments/Delay** button to open the impairments panel. This is where delay impairments are defined.



a) Select **Delay** from the Master 1 Tx list and check the checkbox.

b) Select one of the Paragon-X built-in delay patterns and set the delay parameters as required to create your delay pattern. Click **Generate** to generate the delay pattern.

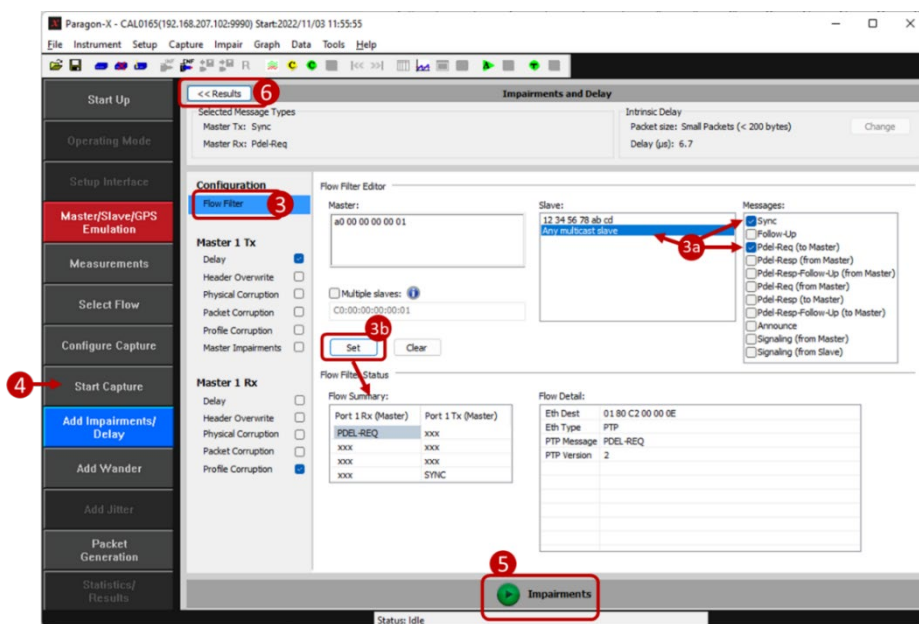
Note: all delay patterns include a fixed delay of several μ s due to the Paragon-X hardware. You may need to adjust the meanLinkDelayThresh parameters in the Time Aware End Station to achieve 802.1as synchronization.

c) User-defined delay patterns can be imported instead of the built-in delay patterns. User-defined delay patterns allow you to replay PDV patterns measured in typical networks or stress the Time Aware End Station with custom test patterns. Example Time Error/PDV profiles are available to download from the [Calnex Product FAQ website](#).


3. Click the **Flow Filter** button to open the panel where impairment filters are configured. Impairment filters define which PTP messages are impaired:

a) Select **Any multicast slave** and check the **Sync** and **Pdel-Req (to Master)** checkboxes.

b) Click **Set** and verify that your selected messages are listed in the **Flow Summary** box.



4. Start the capture. PDV and 1PPS measurements will be displayed on the Paragon-X GUI and can be viewed in CAT as described in Section 7.2. Allow the capture to run for a few seconds or longer to provide a baseline measurement with no delay impairments added.

5. Start applying the delay pattern by clicking the  **Impairments** button.


6. Click the **Results** button to return to the measurement screen where you will see two graphs:

- The upper graph shows the PDV of the PTP messages between Paragon-X and the Time Aware End Station. This is the same graph as seen when running the noise generation test.
- The lower graph shows the delay impairment pattern and progress as the impairment is applied.

7. Open CAT to see the effects of the noisy PTP signal on the Time Aware End Station:

- 1PPS and Reverse Sync time error graphs show how the Time Aware End Station's internal clock is affected by the incoming noisy PTP signal.
- Peer Delay Turnaround and NRR graphs show how the Time Aware End Station's internal calculations are affected by the incoming noisy PTP signal.

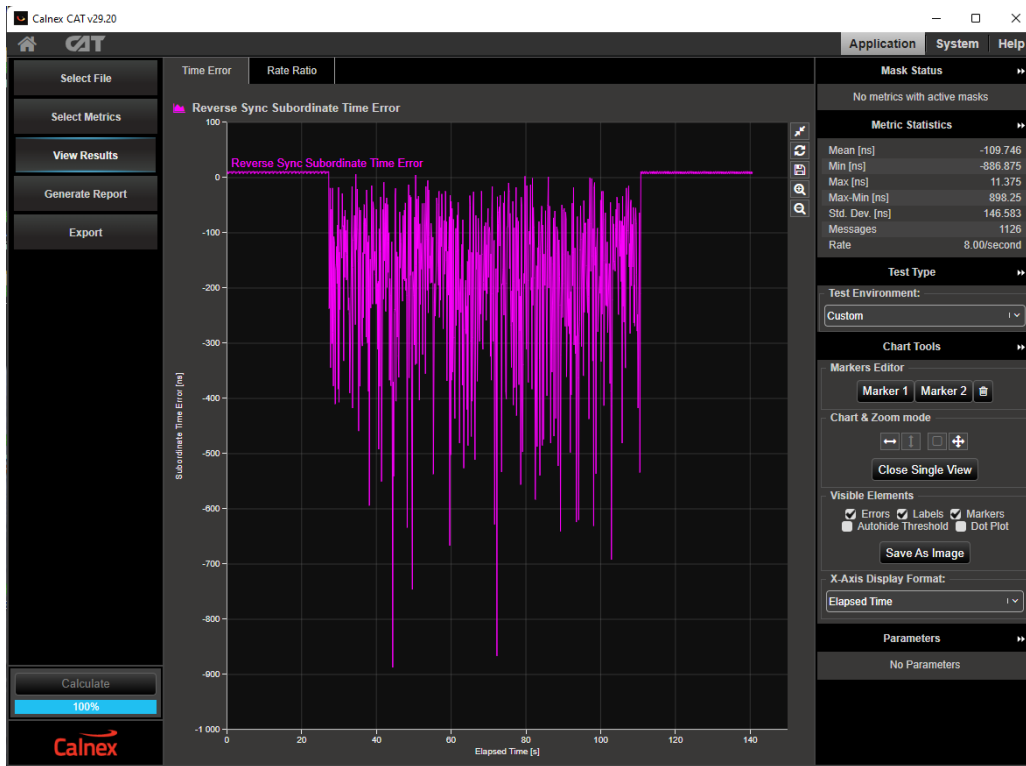
8. The Time Aware End Station's internal timing state machine status must be viewed separately, e.g. the devices management interface.

9. Click the  **Impairments** button to stop applying the delay pattern.

8.3 Example Noise Tolerance Test Measurements

The following two CAT screenshots show example measurements of a Time Aware End Station during a noise tolerance test where an 85sec burst of noise was applied to the PTP signal:

- Noise on the Reverse Sync Subordinate Time Error and NRR graphs indicates that the Time Aware End Station has not filtered out the incoming noise and it is affecting the End Station's internal clock.
- The CSRO Delta graph shows zero because the Time Aware End Station transmitted CSRO = 1.0 in the Reverse Sync messages.
- CAT uses the CSRO information carried in the Reverse Sync messages to calculate the NRR (DUT) measurement.



9 Time Aware End Station Impairment Tests

PTP messages traversing an 802.1AS network may be re-ordered, dropped, corrupted, or duplicated if the network becomes congested or traffic is re-routed around a break. Time Aware End Stations must be capable of handling these disturbances on the incoming PTP message flow in a safe way. The 802.1AS standards do not specify impairment tests or how Time Aware End Stations must handle such events, equipment vendors and network operators must define their own limits for Time Aware End Station performance when subject to anticipated network impairments.

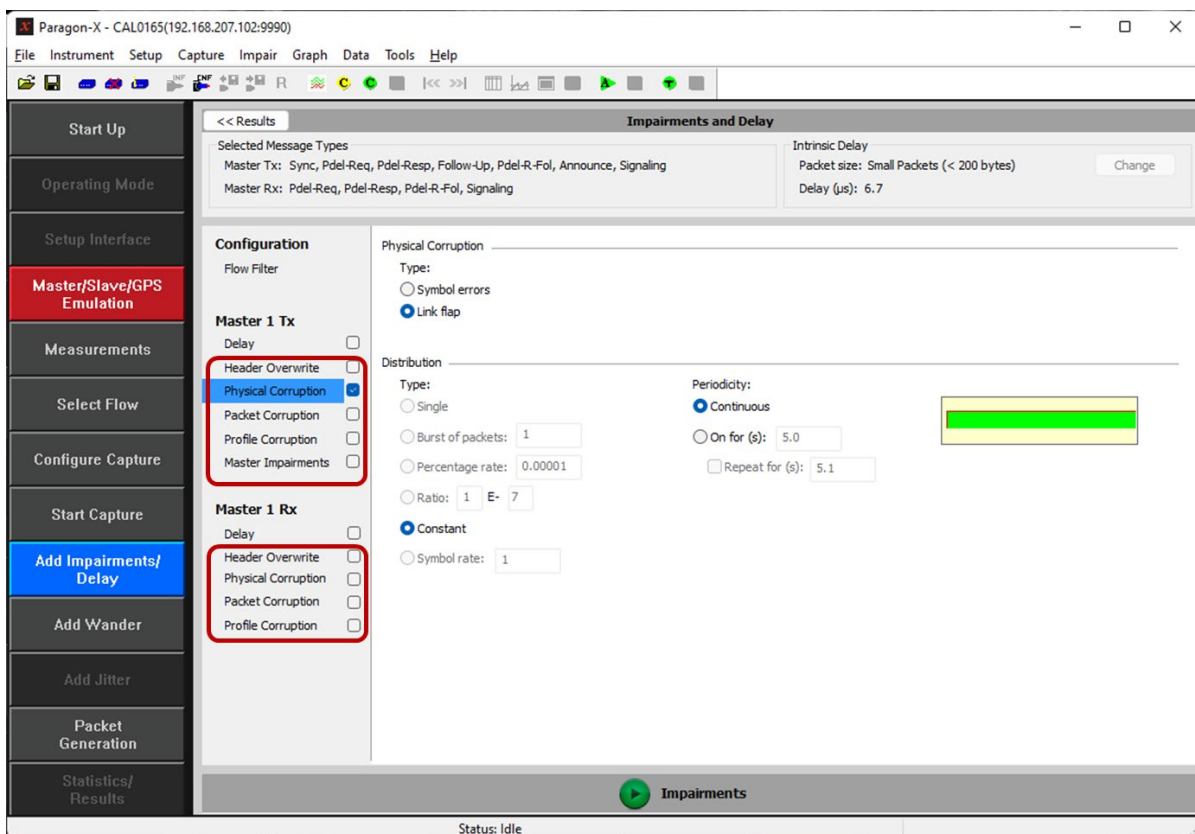
The steps in this section show how Paragon-X generates impairments that simulate network events and measures the effect on a Time Aware End Station's reverse sync and 1PPS clock signals.

Paragon-X monitors the 1PPS and Reverse Sync outputs from the Time Aware End Station but you will need to monitor the device's internal synchronization state machine to know when changes occur (e.g. the device enters holdover).

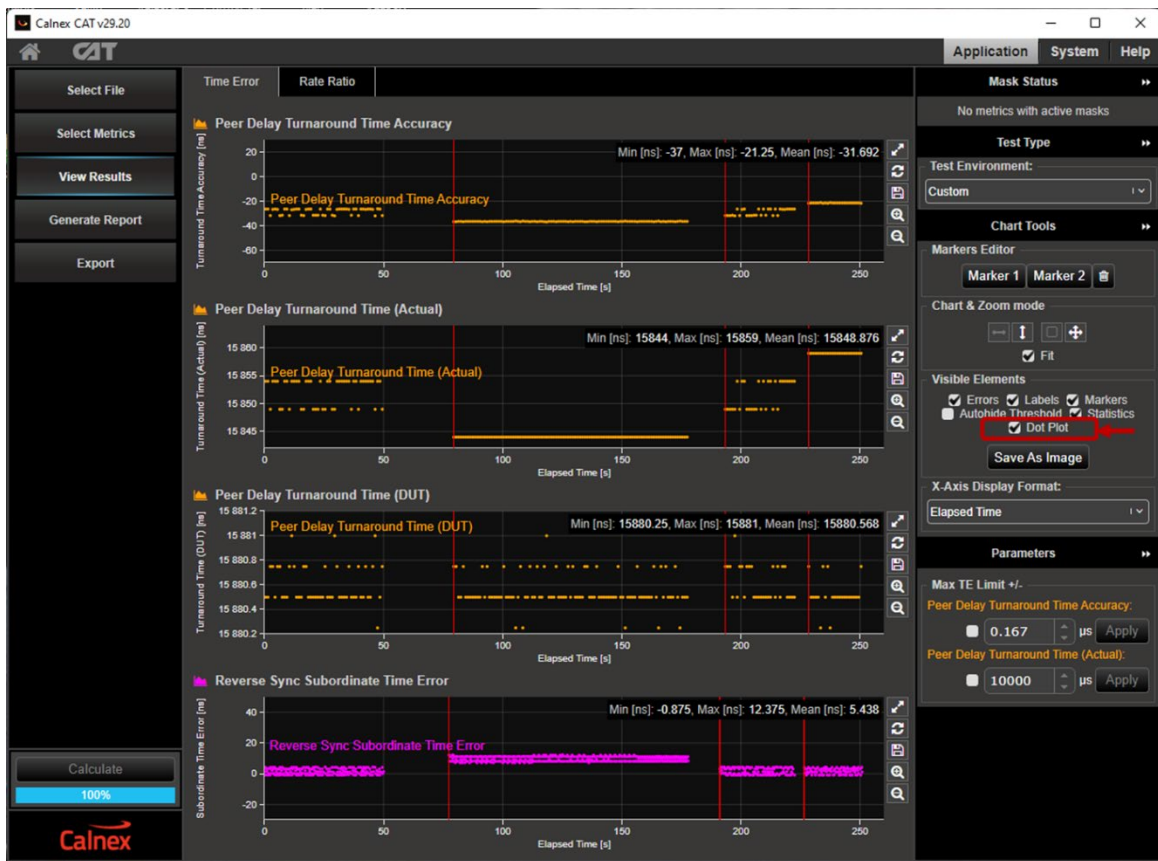
9.1 Test Process

Follow all the steps described in Section 8.2 except in step 2 where you define impairments instead of delays.

Paragon-X can apply impairments to PTP messages both transmitted to and received from the Time Aware End Station. Physical corruption allows you to simulate errors on the Ethernet link including link disconnection as shown in the screenshot below.



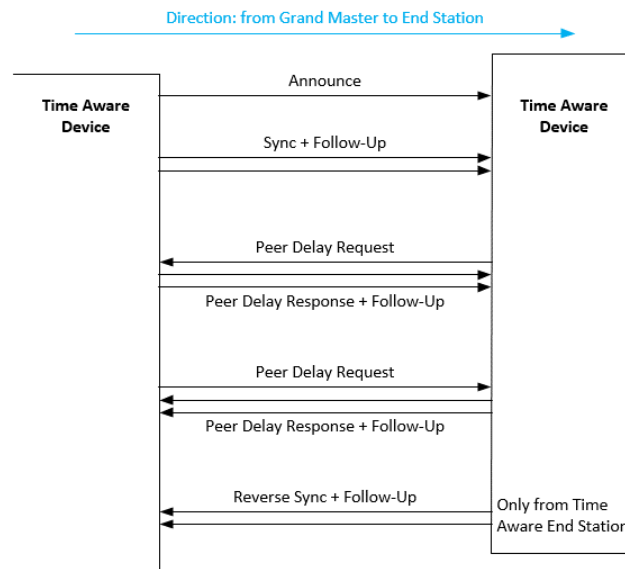
Time measurement results can be viewed in CAT with the example below showing a series of link flaps that simulate cable disconnections. The vertical red lines on the CAT graphs indicate that packets have been lost and checking the **Dot Plot** checkbox clearly shows the gaps when the link was broken.



Appendix A. 802.1AS Timing Mechanisms

802.1AS PTP Messages

The diagram below illustrates the set of PTP messages exchanged between a Grand Master and an End Station to synchronize time.



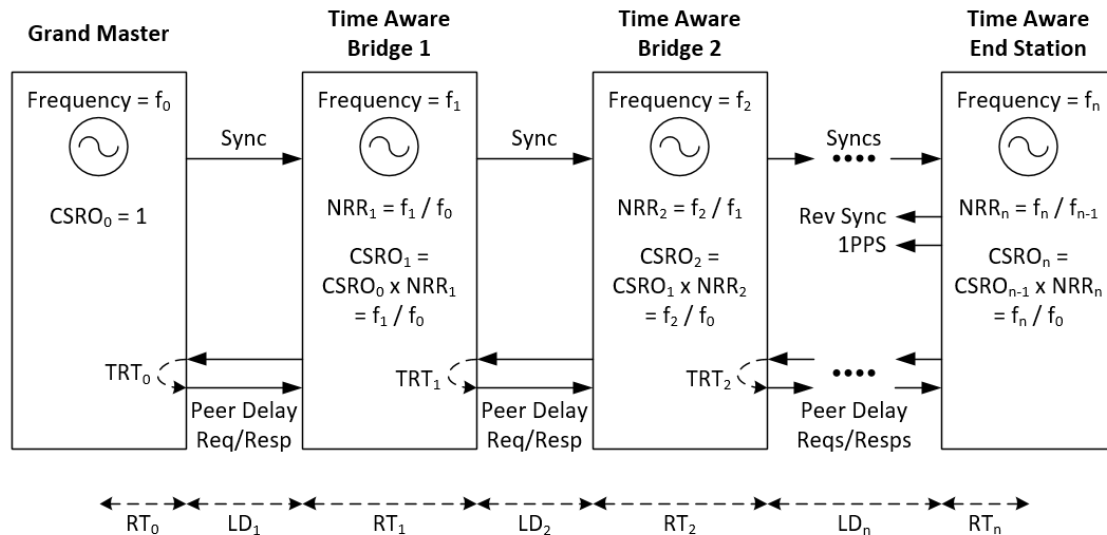
- Announce messages are used to determine the Grand Master within a network and establish the synchronization hierarchy. The default rate for Announce messages is one per second.
- Sync messages carry the reference time from the Grand Master out to Time Aware End Stations, traversing Time Aware Bridges on the way.
 - The 802.1AS-2020 standard allows Sync messages to be one-step (Correction Field appended into the Sync message on transmit) or two-step (Correction Field carried in Sync Follow-Up messages). The 802.1AS-2011 standard requires two-step operation. All devices in an 802.1AS network must use either one or two-step operation, mixed operation is not allowed.
 - The Grand Master transmits Sync messages at a default rate of eight per second.
- Peer Delay Request and Peer Delay Response messages are exchanged in both directions.
 - By counting the number of clock oscillator cycles between successive Peer Delay exchanges, 802.1AS devices can calculate the ratio between their local oscillator frequency and the oscillator frequencies on upstream and downstream neighbours. This is the Neighbour Rate Ratio (NRR) parameter.
 - Calculating NRR in both directions allows 802.1AS networks to rapidly reconfigure when there is a network change (e.g. new Grand Master, new device inserted, re-routed communications).
 - Devices transmit Peer Delay Request messages at a default rate of one per second.
 - Receiving devices must reply with a Peer Delay Response message within 10ms.
 - Peer Delay Response messages are always two-step so have a Peer Delay Follow-Up.
- Reverse Sync messages (and their Follow-Up messages) are optionally transmitted from Time Aware End Stations to allow network monitoring and testing.
 - Reverse Sync messages have the same format and timing specifications as Sync messages, but they carry a specific value in the ReverseSyncDomain that is only used for testing.

Logical Syntonization in 802.1AS Networks

A Logical Syntonization mechanism is used across 802.1AS networks from the Grand Master Clock, through Time Aware Bridges to the Time Aware End Stations.

The Logical Syntonization mechanism allows each device in the network path to mathematically compensate for slight differences in their oscillator frequencies. Knowing the ratio of their local oscillator frequency to Grand Master Clock frequency, Time Aware End Stations can simply multiply their time by an appropriate factor to stay in synchronization with the Grand Master Clock. Mathematical multiplications are easily performed by modern software systems and removes the need for complex PLLs and servo mechanisms that are typical in Boundary Clocks.

The diagram below shows the flow of messages and calculations that used in the Logical Syntonization mechanism.



LD = Link Delay (time for Sync messages to propagate across the link).

RT = Residence Time (time for Sync messages to traverse the bridge or to/from the end station clock).

TRT = Turn Around Time (time between receiving Peer Delay Request and sending Peer Delay Response)

RT₀ accounts for time between Master preparing a Sync message and transmission of the Sync.

RT_n accounts for time between End Station receiving a Sync message updating it's local clock.

- Sync messages carry the Grand Master Clock time and a Correction Field (CF). The CF is updated by each Time Aware Bridge to add the propagation delay of the incoming network segment and the residency time of the sync message passing through the Time Aware Bridge. The CF carries the accumulated link delays and residence times that the Sync message incurred since leaving the Grand Master.
- Each device that transmits Sync messages calculates a Cumulative Scaled Rate Offset (CSRO) number that relates how fast/slow the device's local clock runs compared to the Grand Master clock frequency. The Grand Master transmits a CSRO = 1.0. Devices format the CSRO number into a 32-bit parameter that is carried in the Follow-Up Information TLV associated with the Sync message. The TLV is attached to the Sync Follow-Up message for two-step operation or the Sync message if the optional one-step processing is enabled.
- Slave ports on Time Aware Bridges and Time Aware End Stations exchange peer delay messages with their upstream connected master. The timing of the Peer Delay Request and Peer Delay Response messages allows the slave port to calculate the propagation delay of incoming sync messages.
- Time Aware Bridges and Time Aware End Stations use consecutive peer delay messages to assess the frequency of their local oscillator compared to the upstream sender's oscillator frequency. The Neighbour Rate Ratio (NRR) is calculated.
- Using the received CSRO and calculated NRR, Time Aware Bridges and Time Aware End Stations calculate their local CSRO. The local CSRO mathematically relates the local time and frequency back to the Master Clock.
- Time Aware Bridges use the local CSRO to mathematically scale their internal clock frequency and measure the residency time of sync messages crossing the bridge. The outgoing Sync message CF is calculated by:

Outgoing CF = incoming CF + incoming propagation delay + residency time

- Time Aware Bridges pass on their calculated CSRO to the next downstream station in the Follow-Up Information TLV associated with each sync message.
- Each Time Aware End Station uses its local CSRO to mathematically scale its internal clock frequency to match the Grand Master oscillator frequency. The End Station calculates the final link delay using the scaled clock.
- Each Time Aware End Station extracts the origin time and accumulated link delay from incoming Sync messages. Adding the final link delay and Time Aware End Station residency time gives an accurate time related back to the Grand Master.
- Time Aware End Stations use their internal CSRO to scale their oscillator frequency when updating their local clock during the periods between Sync messages. Each received Sync message allows the Time Aware End Station to adjust its local CSRO thus keeping the End Station synchronized with the Grand Master.
- Time Aware End Stations may transmit Reverse Sync messages carrying their local time for test and measurement purposes. If so, they should transmit CSRO = 1.0 in the CSRO field of the Reverse Sync Follow-Up Information TLV.

This is only a brief description of the main steps of Logical Syntonization. Sections 6.6.6 and 16.10 of the IEEE1588-2019 standard document describe the NRR and CSRO calculations and CSRO transmission format, including a few worked numerical examples. Sections 7.3.3 and 11.1 of the IEEE 802.1AS-2020 standard document define the process specific to 802.1AS networks. Please refer to these documents for more details.

Appendix B. How does CAT Calculate CSRO, NRR and Peer Delay Turnaround Time?

Paragon-X captures data for CAT to analyze and display. CAT calculates the Cumulative Scaled Rate Offset, Neighbour Rate Ratio and Peer Delay Turnaround Time numbers each time that a Peer Delay message exchange occurs. This appendix outlines the calculations.

Cumulative Scaled Rate Offset (CSRO)

For Time Aware End Station measurements, CAT uses the CSRO values carried in Reverse Sync FUP Information TLV messages to calculate the data that is displayed on the CSRO Delta graph:

CSRO Delta = CSRO received in Reverse Sync messages – CSRO transmitted from Paragon-X master port.

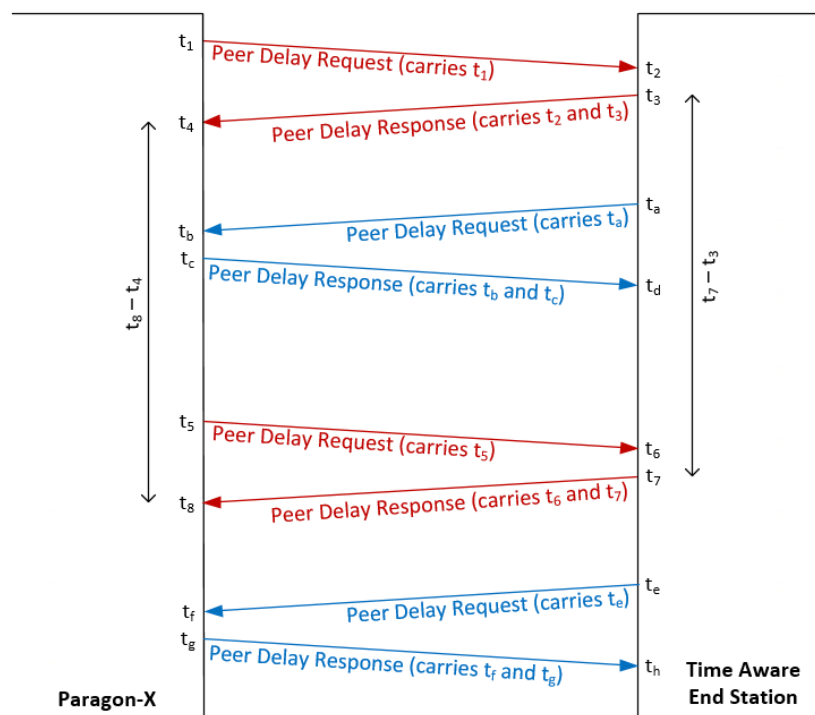
Time Aware End Stations should transmit CSRO = 1.0 in the Reverse Sync messages. Since the Paragon-X master transmits CSRO = 1.0 (default value), CAT calculates **CSRO Delta** to be zero.

One CSRO Delta calculation is made on reception of every Sync FUP or Reverse Sync FUP message.

Neighbour Rate Ratio (NRR)

Peer Delay message exchanges occur in both directions allowing Paragon-X and the Time Aware End Station to calculate their own NRR values based on their local clocks. The Time Aware End Station uses its NRR to calculate its local CSRO and adjust its clock scaling. If the Time Aware End Station makes these calculations and adjustments perfectly, its internal NRR will be the reciprocal of the NRR that Paragon-X measures. However, there is no standard mechanism for the Time Aware End Station to broadcast its internal NRR.

The diagram below shows consecutive Peer Delay messages and the timestamps carried in each message (Follow-Up messages are omitted for clarity).



CAT calculates NRR measurements using the timestamps recorded by Paragon-X:

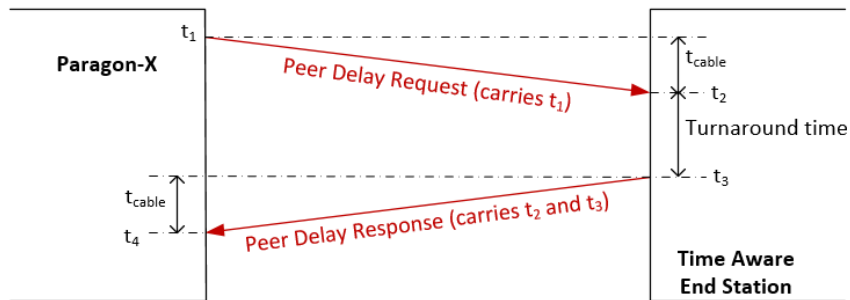
- **NRR (Actual)** at the Paragon-X = $(t_8 - t_4) / (t_7 - t_3)$
- **NRR (DUT)** is calculated from the CSRO values in the Reverse Sync messages.
- **NRR Accuracy** = **NRR (Actual)** – **NRR (DUT)**

CAT displays the NRR measurements in ppm.

CAT updates the **NRR (DUT)** graph once every Peer Delay message exchange. CAT displays the **NRR (Actual)** and **NRR (Accuracy)** graphs as moving averages over the **NRR Period**. CAT continues to calculate the NRR measurements using consecutive Peer Delay message exchanges for the duration of the test.

Peer Delay Turnaround Time

Paragon-X records timestamps from the Peer Delay messages that it initiates. CAT uses these timestamps, plus the cable delay, to calculate the Peer Delay turnaround time of the Time Aware End Station. The cable delay is the same in each direction and was provided when the Paragon-X master was configured. The diagram below shows the relevant timestamps and messages (Follow-Up messages are omitted for clarity).



CAT calculates turnaround time using the timestamps recorded by Paragon-X:

- **Peer Delay Turnaround Time (Actual)** = $t_4 - t_1 - 2 * t_{cable}$
- **Peer Delay Turnaround Time (DUT)** = $t_3 - t_2$
- **Peer Delay Turnaround Time Accuracy** = **Peer Delay Turnaround Time (Actual)** – **Peer Delay Turnaround Time (DUT)**

CAT displays Peer Delay Turnaround data in units of ns.

CAT continues to calculate the Peer Delay Turnaround Time measurements for each Peer Delay message exchange that Paragon-X initiates for the duration of the test and plots the results on graphs.



Calnex Solutions plc
Oracle Campus
Linlithgow
EH49 7LR
United Kingdom
tel: +44 (0) 1506 671 416
email: info@calnexsol.com

calnexsol.com

© Calnex Solutions, 2023.

This document is subject to
change without notice.

CX3015 v1.0